

Lewis Ski Club

August 2018



MEETING INFORMATION

Next meeting will our Annual Picnic on Tuesday, August 7 @ Albion Woods Picnic Area in Strongsville. Regular meetings at Lenau Park will resume in September to kick off the upcoming ski season.

Don't miss our Annual Picnic!

Tuesday, August 7 from 4-9 p.m. at Albion Woods in the Cleveland Metroparks off of Albion Road in Strongsville. There's plenty of space for Frisbee, kickball, corn hole, etc. So bring your fun along! \$10 for steak or chicken. Side dishes, beverages and picnic ware are included.

Sign up online:

<https://lewisskiclub.org/picnic>

President's Message

All, Please, join us at the summer picnic! We have exciting information on our upcoming week long trips and the schedule for our Friday bus trips. Now is the time to begin thinking about the next ski season! See you there!

Tom



How to Contact Us



2018-2019 CLUB OFFICERS

<u>Position</u>	<u>Name</u>	<u>Email @lewisclub.org</u>
President	Tom Palisin	President
Alpine V.P.	Kim Hulick	AlpineVP
Nordic V.P.	Kathy McGinnis	NordicVP
Activity V.P.	Barb Knipple	ActivityVP
Recorder	Cindy Bush	Recorder
Publicity Director	Janette Neumann	Publicity
Treasurer	Janet Dubas	Treasurer

TRUSTEES

<u>Name</u>	<u>Term Expires</u>	<u>Email@lewisclub.org</u>
Cheryl Bowman	2021	Trustees
Mike Kaltenstein	2020	Trustees
Therese Telzrow	2019	Trustees

Having a Good Time on the Goodtime III Happy Hour Cruise

It was another beautiful night for the Goodtime III! We had the biggest showing yet with at least 30 of our ski club members, family and friends.

Basking in the sunshine on the upper deck we cruised smoothly on the lake. We met new friends and caught up with members we hadn't seen since ski season.

It was an official Goodtime as some of us hit the dance floor and had a good time!

18 of us headed to Merwins Wharf afterwards for dinner and drinks. As we finished our meals and were getting ready to leave we were treated to a fireworks display which made a fitting end to another enjoyable Goodtime III outing. Join us next year!

Therese Telzrow



Activities -

Please refer to our website for event contact information at <https://lewisskiclub.org/>

Wednesday, August 1 @ 5:30 Medina County Fairgrounds Tour and rough Truck Event

Everyone should meet at the gate at the fairgrounds entrance on 735 Lafayette Road, Medina, (the white building next to the brick community center building) at 5:30 p.m. Gate admission is \$6, \$3 for seniors and kids. Note: There's two entrances, the Lafayette one is a bit easier for out of towners to find and is a bigger lot

Wednesday night is the Rough Truck event, where guys and gals in trucks and other vehicles race around a muddy track in the grandstand. That starts at 7 and admission is \$9. If you're interested, we can buy tickets to that when we get there to avoid the lines. There's about 70 drivers, so you can come and go from the event as you please; it usually takes about 3 hours plus a jump contest.

I can give a tour of the fairgrounds and we can all decide what everyone wants to do and how long you would like to stay. There is also a beer garden and you can have a drink either in the enclosure or while watching a big grandstand event.

Contact Allison W

First two Mondays in August (6th and 13th) @ 6 pm Volleyball at the home of Narrin and Eric Carlberg

Will be canceled in case of rain. Bring your own chairs, beverage and a snack to share. Watch for a group email that will give the Carlberg's address.



Friday, August 3 @ 6pm Bike Ride and Alex Bevan Concert

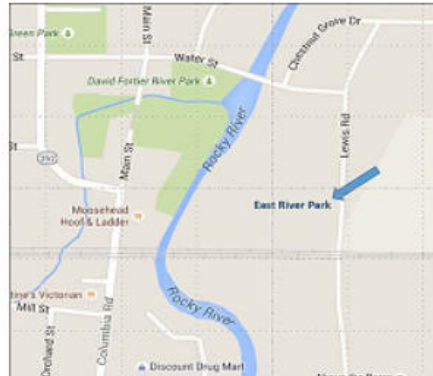
Please meet at the Emerald Necklace Marina parking lot @ 6:00 p.m. Address is 1500 Scenic Drive, Lakewood 44107. We will be biking south along Valley Parkway and returning to the Marina for music and refreshments. The biking route will provide many varying levels of biking pleasure for all enthusiasts. The easy riding, mostly flat all purpose trail is intersected with many steep climbing side trails for those wishing to have a more athletic experience. After the bike ride we will watch the concert on the lawn. Bring chairs or a blanket if you want to sit. Food and beverages are available for purchase. Contact David K

Tuesday, August 14 @ 6 pm Badminton 3

Join us for an evening of badminton. There are picnic tables available, so bring a sandwich or salad if you want. All badminton equipment and water will be provided.

Location: East River Park 7878 Lewis Road in Olmsted Falls

Contact: Cindy D.



Members enjoying the festivities at Donauschwaben's Beer and Brats on July 20th

Friday, August 10 - Sunday, August 12 Findley Lake Camping and Paddle Sports Weekend

Sign up is available on-line. Only \$32 per person. See Flyer for details.



Friday, August 10th, 4 pm Star Show

The Lewis Ski Club's Chile Ski Trip 2018 participants (and YOU!) will be meeting at the Cleveland Museum of Natural History's Shafran Planetarium on Friday, August 10th at 4pm for an exclusive Southern Sky tutorial by the planetarium staff. This special discussion will help us to understand the sky above the Andes Mountains where we will see exotic (to us) constellations, like...

- Our closest neighbor, Alpha Centauri, just 4.37 light-years away. Did you know that Alpha Centauri is really 3 stars?
- The famous Southern Cross - an asterism in the constellation Crux (you can drop THAT little factoid in to casual conversation at the next cocktail party... Oh, look it up yourself. I had to!)
- The Jewel Box cluster -- more than a hundred sparkling blue jewels around a single red star.
- And, Omega Centauri -- contains 10 million stars and possibly even a black hole at its center -- the most luminous and massive globular cluster visible from anywhere on the planet!

These are just a few of the gems we will be learning to find. Come and learn about them with us!

Nitty gritty details:

When: August 10th, 4 pm show

Who: Lewis Ski Club members and especially the Chile 2018 trip participants!

Where: Cleveland Museum of Natural History's Shafran Planetarium

How: The Planetarium staff are doing this just for us! Out of the goodness of their hearts! Why? Good question... They said they would because we're NASA and they love NASA - even its Ski Club! This will not be advertised and will not be listed on their website. We will need to pay for admission to the museum and to the star show just like *regular* people (we're going undercover), so get there a bit early. We don't want all those non-NASA Lewis Ski Club people to get tickets before we get ours! We cannot reserve seats since the regular show will happen and THEN they will do a special southern sky tour for us. So, let's show up to make it worth their time and trouble and be appreciative!

Then what: we will all walk over to the Cleveland Museum of Art and have an early dinner in the Provenance Cafe!

What else: Please send an email to Chile2018@lewisskiclub.org to let us know you're coming. Hope to see you there!

From: Your Chile 2018 trip leads - Dianna and Linda

Friday, August 17 @ 5 pm Indians Game with Fireworks



Back by popular demand: Buy your own ticket and meet in the District. Come out to cheer on the Tribe against the Orioles with fellow club members on Friday, August 17, 7:10 pm. Gates open 2 hours prior to game time. This is dollar dog night with postgame Fireworks. Also, the special Giveaway is Yard Flags. As of this writing District tickets are still available. Weekends are very popular and they may sell quickly so if that is your choice act soon. Standing room tickets not for you? No problem, buy a ticket of your choice and come join everyone in the District's upstairs bar pregame, then go back and enjoy watching from your seat. For best selection act early. Contact Jan N. , Publicity Officer for more to RSVP. (See page 2 for email)
<https://www.mlb.com/indians/tickets/>



This could be you on August 17th! Come on out and root for the Indians.

Camping and Paddle Sports Weekend—2018

Date: Friday evening, Aug 10 thru Sunday, Aug 12
Check in at 3 pm Friday; Checkout at 1 pm Sunday



Description: Come join us at Findley State Park for a camping weekend. This will be our first weekend camping trip in several years and should be a great time. Come build some friendships and make some memories. We've reserved 5 side-by-side non-electric campsites and plan to make use of the lake and hiking trails.

Location: Findley State Park is south of Wellington, on SR 58. It has 2 boat launch ramps, hiking, disk golf, and a mountain bike trail. One of the 2 boat launches is in the campground; the other launch ramp has a handicap accessible ramp for launching and retrieving kayaks.

Fishing is allowed if you have a license. Pets are allowed at the campsite, as long as they are on a leash.



Bring your own camping gear and cooking gear, beverages and food. The \$32 fee will pay for the campsites and firewood, at minimum. If more than the break even number of participants sign up, more will be provided by the club as funds allow.

Marianne and Cathe will bring a couple single kayaks, a tandem kayak, and a stand-up paddleboard. We'll bring these to share; and there are kayaks and canoes available to rent from the concession stand at the swim beach.



Space is limited to 20 Participants with 2 tents and cars per site. For more information contact Cathe Radabaugh at fsp-2018@lewisskiclub.org

Kelly's Island Bike Outing

Saturday, August 25th

I plan on trying to catch the 9:30 – 10 Ferry. Call my cell phone so I know who's coming and where we can meet-up. 440-396-0298 Lisa Ferenc

<p>Ph. (419) 798-9763</p> <p>Directions: To Marblehead, Ohio</p> <ul style="list-style-type: none"> • Exit Rt. 2 at 269 North • Take 269 N. to Route 163 • Turn Right (East) onto 163 • Take 163 E into Marblehead. <p>The Kelleys Island Ferry is located at 510 West Main St.</p>	<p>RATES ARE ONE-WAY</p> <table border="0"> <tr> <td>Adult (12 and older).....</td> <td>\$10.00</td> </tr> <tr> <td>Seniors.....</td> <td>\$8.25</td> </tr> <tr> <td>Child ages 5-11</td> <td>\$6.25</td> </tr> <tr> <td>Child ages 4 and under</td> <td>FREE</td> </tr> <tr> <td>Automobiles.....</td> <td>\$16.00</td> </tr> <tr> <td>Motorcycles</td> <td>\$8.00</td> </tr> <tr> <td>Bicycle.....</td> <td>\$3.00</td> </tr> </table>	Adult (12 and older).....	\$10.00	Seniors.....	\$8.25	Child ages 5-11	\$6.25	Child ages 4 and under	FREE	Automobiles.....	\$16.00	Motorcycles	\$8.00	Bicycle.....	\$3.00
Adult (12 and older).....	\$10.00														
Seniors.....	\$8.25														
Child ages 5-11	\$6.25														
Child ages 4 and under	FREE														
Automobiles.....	\$16.00														
Motorcycles	\$8.00														
Bicycle.....	\$3.00														

MAY 25TH - SEPTEMBER 4TH
MEMORIAL DAY THRU LABOR DAY
JULY 4TH - EXTRA BOAT 10PM & 10:30PM

..... Monday thru Thursday

<i>Leave Marblehead</i>		<i>Leave Kelleys Island</i>
7am thru 9pm	<i>Every Hour</i>	7:30am thru 9:30pm
9:30am thru 4:30pm	<i>Every 1/2 Hour</i>	9am thru 4pm
Last Boat 9pm		Last Boat 9:30pm

..... Friday & Saturday

7am thru 11pm	<i>Every Hour</i>	7:30am thru 11:30pm
9:30am thru 9:30pm	<i>Every 1/2 Hour</i>	9am thru 9pm
Last Boat 11pm		Last Boat 11:30pm

..... Sunday

7am thru 9pm	<i>Every Hour</i>	7:30am thru 9:30pm
9:30am thru 6:30pm	<i>Every 1/2 Hour</i>	9am thru 6pm
Last Boat 9pm		Last Boat 9:30pm

Bike rentals at several shops around town if you don't have your own. Golf cart rentals.

Kayak rentals are also available near the campground - \$19 hour single/\$30 hour double rental

Join the Lewis Ski Club as we explore all that PARK CITY, UTAH has to offer on our 2019 adventure leaving Cleveland, Ohio on Saturday, February 23rd through March 2

\$1775

- Roundtrip Air from Cleveland, Ohio to Salt Lake City, Utah
- Roundtrip Ground Transportation from SLC to Park City with grocery stop.
- 7 Nights at The DoubleTree Yarrow based on double occupancy
- 5 of 6 day Adult Lift Tickets
- Welcome Reception
- Lunch on Us \$15 credit per ski day for Vail owned and operated restaurants
- Roundtrip Porterage/Baggage Handling
- Daily Hot Breakfast
- Mid-Week Group Dinner
- Heated Pool, Hot Tub
- Senior Rates Available
- 6th day Lift ticket at additional fee
- Complimentary Park City Transit
- Biggest Resort in the USA
- 348 Trails, 41 Lifts, 8 Terrain Parks
13 Bowls

4 PAYMENT SCHEDULE

1st due now \$447 non-refundable

2nd \$452 due Sept 28, 2018

3rd \$458 due Nov 30, 2018

** 4th \$418 due Dec 28, 2018

** EPIC Pass Holder do not pay 4th payment

<https://www.epicpass.com>

PAYMENT ONLINE:

<https://lewisskiclub.org/parkcity2019>

Trip Leader: Kim Hulick

Parkcity2019@lewisskiclub.org

Membership to the Lewis Ski Club is required and is available on line at:

<https://lewisskiclub.org>

Trip Price does not include baggage fees, any additional fuel surcharges, or airport fees, which may be imposed by the airline prior to departure. Lewis Ski Club reserves the option to change airlines, lodging and/or itineraries.

Park City / Canyons Ski Resort

<https://parkcitymountain.com>

The DoubleTree Yarrow offers a fantastic location less than five minutes from Historic Main Street. And don't forget the warm chocolate cookies as you return. Rooms are equipped with WiFi, Flat screen TV and a mini refrigerator. Savor seasonal cuisine at the Roots Grill featuring a cozy fireplace and floor to ceiling windows.

<https://Doubletree3.hilton.com>

1800 Park Avenue, Park City, Utah 84060

Lewis Ski Club: Ski Snowmass/Aspen/Aspen Highland/Buttermilk in Colorado

Sat, Jan 19 – Sat, Jan 26, 2019 Cost **\$1570**




**ASPEN
SNOWMASS®**

<ul style="list-style-type: none"> • Roundtrip flight from Cleveland, OH to Denver, CO • Roundtrip transportation: Denver-Snowmass • Welcome party/midweek party/after trip picture party • 7 nights accommodations at the Top of the Village Condo • https://www.destinationhotels.com/destination-residences-snowmass/accommodations/top-of-the-village-condominiums • Ski in/ Ski Out • 4 people per 2 bedroom / 2 bath condo • Complimentary wi-fi with fully equipped kitchen, fireplace • Hot tub, heated pools, sauna, fitness room • Ski storage locker • Laundry in unit, Concierge, etc... • Private patio/balcony with gas grill 	<ul style="list-style-type: none"> • 5 days interchangeable skiing/riding at Snowmass/Aspen/Aspen Highland/Buttermilk *BASE IKON pass holder, ski/ride 5 days at Snowmass Mon-Fri due to pass Holiday restriction on Sat 1/19 and Sun 1/20. • Extra 6th day at adult lift ticket available for an additional cost • Snowmass Elevation 7880 ft – 12510 ft Trails: easiest: 6%, more difficult: 47%, most difficult: 17%, expert: 30% • Buttermilk Elevation 7,870 ft - 9,900 ft Trails: easiest: 35%, more difficult: 39%, most difficult: 21%, expert: 5% • Aspen Elevation 7,945 ft - 11,212 ft Trails: easiest: 0%, more difficult: 48%, most difficult: 26%, expert: 26% • Aspen Highland Elevation 8,040 ft - 11,675 ft Trails: easiest: 0%, more difficult: 23%, most difficult: 12%, expert: 65%
<p>Payment online https://lewisskiclub.org/snowmass2019 Trip Leader: Tom Vannuyen 440-879-8088</p> <p>Question? Snowmass2019@lewisskiclub.org</p>	<p>Trip insurance available upon request (strongly recommended: must be paid within 21 days of sign up)</p> <p>4 Payment schedule: 1st payment \$400 due now, non-refundable 2nd payment \$403 due Sept 28, 2018 3rd payment \$408 due Oct 26, 2018 4th payment \$359 due Nov 30, 2018 (Will need to include cost for extra day lift tickets) (additional charge applies) -For IKON pass holder, no need to pay the 4th payment. - Interested in an IKON pass? Purchase the IKON pass through our vendor for lodging discount. http://www.sportsamerica.com/ikon-Lewis -Please contact trip leader if you purchase an IKON pass. Snowmass2019@lewisskiclub.org</p>

* Membership in the Lewis Ski Club is required and is available at: <https://lewisskiclub.org>

* Does not include baggage fees, any additional fuel surcharges, or airport fees, which may be imposed by the airline prior to departure. Lewis Ski Club reserves the option to change airlines, lodging and/or itineraries