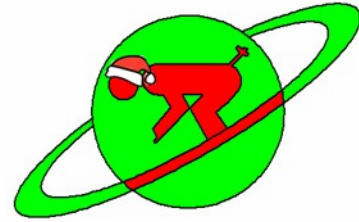


December 2011

NASA Lewis Ski Club

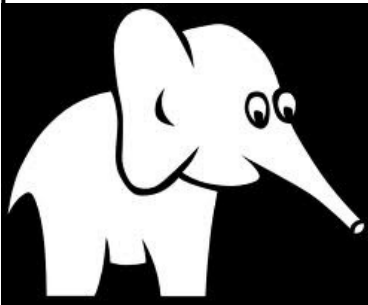


Inside:

President's Message.....	2
Club activities.....	2-3
Nov. meeting recap.....	4
Birthdays.....	4
CMSC racing flier.....	5
Holiday Valley 1 flier.....	6
Seven Springs flier.....	7
Holiday Valley 2 flier.....	8
Steamboat & Tahoe fliers....	9-10
Wash. Hut Hopper flyer.....	11
Laurel Hill Flyer.....	12
Jay Peak trip flier.....	13-14
Membership Application...	15
Trip Application.....	16

Next meeting

Tuesday, Dec. 6, 100th Bomb Group, Brookpark Road
Representatives from Geiger's will bring some gear to show. In addition, the meeting will also host the annual White Elephant Exchange. Wrap up your unused "treasures" for someone else to "rob."



Board meeting: Tuesday, Dec. 13, 5:30 p.m., Panera Bread on Tiedeman Road. This is one week earlier than scheduled.

The fliers for the first three day trips are available; check them out on pages 6-8!



The officers of the NASA Lewis Ski Club wish everyone a Merry Christmas and a Happy New Year!



President's message...

Snow! Yes, the first snow of the season has arrived, or was that just some strange magic on 11-11-11? Regardless, signs of snow gives us hope that the ski season is almost here.

Hopefully you didn't miss the Nov. club meeting presentation on nordic gear and split boards. Special thanks to Larry and Stacey for a job well done! Also, congratulations to Mary Vedda for winning a pick-a-day pass from Boston Mills.

If you have not already done so, don't forget to mark your calendars for the rest of this season's club meetings. December will be a double header with Geiger's gear and the annual White Elephant. Bring your "elephants" and show up early for the happy hour portion of the meeting to spend some time looking at gear and talking with the friendly folks from Geiger's. January will further get you ready for the snow season with expert advice from a local chiropractor to help keep you safe on the slopes.

Even though the holiday season is upon us, keep a watch at your email and the newsletter for activities, including for example, the CMSC holiday and the snow and ski show. As always, keep a watch out for details on the club's upcoming day trips. I'm sure I don't need to tell you that the day trips sell out fast, so get your plans ready for time on the slopes this winter season. The first trip is only about a month away.

—Aaron



Glissading down the side of Mt. Shasta.

Club Activities –December

With the holidays & the ski season fast approaching, there are not a whole lot of activities coming up to report on. If you would like to volunteer to have a get together after work or an event to share with fellow club members, contact Ray Neumann (see page 3)

12/1: Snow & Ski Show at Quaker Steak & Lube

Thursday 6pm - 9pm at Quaker Steak & Lube, 5935 Canal Road, Valley View, OH 44125. Free Admission! Door Prizes & Giveaways! Complimentary hors d'oeuvres! Bring a coat for Coats for Kids and receive double prize entry Visit the website at www.quakersteakandlube.com



12/6: White Elephant Exchange at the December Club Meeting:

All you have to do to participate is bring a very nicely wrapped "white elephant" to the club meeting. The "white elephant" can be anything you've had in your closet (continued on page 3)

that someone else could use or just a regift that you don't really want. So, you bring your gift; check in, get a number and place the gift on the table. The number you get will determine the order in which you get to select another gift from the table during the exchange. You open it, and then you get one chance to either keep the gift or steal from one of the previous openers! Please join in on the fun this year.

12/28: CMSC Holiday Party

Wednesday 7pm to Midnight at Quaker Steak & Lube, 5935 Canal Road, Valley View, OH 44125. Phone: 216-986-9464.



Club officers

Position	Name	Email @lewisclub.org
President	Aaron J. Swank	president
Alpine V.P.	Dave Root	alpinevp
Nordic V.P.	Allen Porter	nordicvp
Activity V.P.	Ray Neumann	activity
Recorder	Barb Knipple	recorder
Publicity Director	Allison Wood	publicity
Treasurer	Janet Dubas	treasurer

Committee Chairs & Trustees

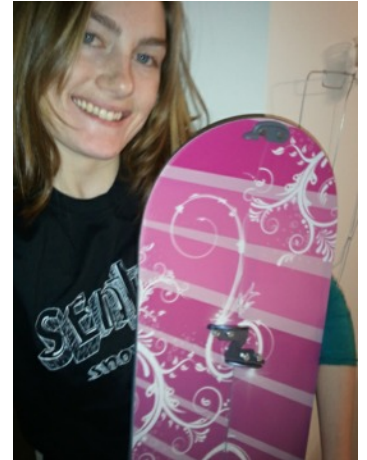
CMSC Representative	Victoria Wise	cmsc
Racing	Lisa Lambert	race
Membership	Lisa Ferenc	membership
Web curator	Lisa Elonen-Wright	webcurator
Alternate web curator	Lisa Lambert	webcurator
Trip	Tom Vannuyen	tripchair
Trustee	Lori Manthey	trustees
Trustee	Mark Hyatt	trustees
Trustee	Bruce Frankenfield	trustees

Club members present on free-heel gear at Nov. Meeting

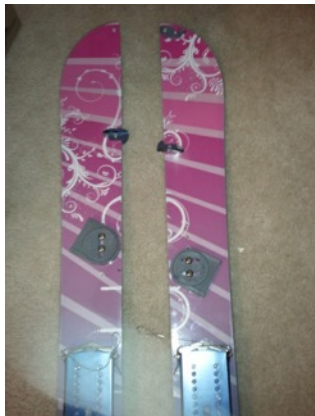


reached into his large basement inventory of ski gear to bring out a wide variety of free-heel skis for the slopes and the back country.

So you didn't realize so many different types of "cross-country" gear existed? Classic cross country, skate style cross country, cross country downhill, telemark, mountaineering, split boards, mountaineering snowshoes, not to mention the different styles of boots and bindings. And now you tell me there is a left and a right hand pole? What are those funny skins/scales for again? If you missed the November club meeting, you sure missed out on a special presentation by fellow Lewis Ski Club members. Club member Larry Anderson presented at the November club meeting on free-heel gear for the snow. Larry



Club member Stacey Bagg also showed off her special split snow board gear, aka "Splitboard". Surely this was a rare sighting of some unique gear. Are they skis or is it a snowboard? The gear lets you decide. Next time you see Larry or Stacey, be sure to thank them for their time and the informative presentation at the November meeting. If you missed the meeting, remember that you can always ask someone in the club for help getting started with free-heel gear. Maybe it is time to try something new this season.



Happy December Birthday to:

Cheryl Alden Bruce Frankenfield David Gross Carol Vandenberg

Jerry Hill Ron Howard Bernadette Kan Jaro Benko

Michael Krinov Kathleen Moran James Reed Lunn Keuchel

Pat Murphy Peggy Richards Shelli Sharp Michael Krinov

Gene Walker Steve Zlatarich Joe Roche





WEDNESDAY NIGHT RACE SERIES

At Boston Mills Ski Area

Presented by: CMSC

Sponsored by: Buckeye Sports Center

Join us for the 2012 Wednesday Night Race Series... Do you have something BETTER TO DO on Wednesday Nights? We don't think so.

RACE FEE: (Same Great Price!)
Race fee by Dec. 29 is \$50
Race fee after Dec. 30 is \$55

RACE FEE INCLUDES:
Seven Wednesday Night Races
(2 runs each night), includes finals
Feb. 22
Buckeye Sports Gift Certificate to top
two overall finishers in each class
Beer Night on Jan. 25
Party and awards Wed. Feb. 22 after
race

RACE DATES:
January 11, Giant Slalom
January 18, Slalom
January 25, Giant Slalom (Beer Night after
the race)
Feb 1, Slalom
February 8, Giant Slalom
February 15, Slalom
February 22 (WEDNESDAY): final race of
series, party and awards after

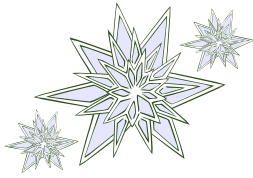
NEED-TO-KNOW INFO

Bib pick-up between 6 and 6:45 p.m. on Wednesday nights, Races begin at 7:30 p.m., Croyle Race Hill, Visit www.skicleveland.com for day-of race status. For more info, contact: Frank Houdek, (C: 216-403-9191) or FrankHoudek@onecom.com

NOTE: All racers must be a member of a CMSC ski club and will be responsible for their own lift ticket (we recommend the pick-a-day package offered by Boston Mills/Brandywine Ski Area). If you have never raced in this series before and have not qualified and/or participated in a weekend CMSC race, you will be placed in a Qualifier Class so that we can place you in the proper race class (more fun for you!). This qualifier or series DOES NOT qualify you for the weekend races. The number of classes will vary based on participation.

MAIL WITH RACE FEE TO: FRANK HOUDEK, 14400 HUBBARD RD. BURTON OH 44021 (Make check payable to "CMSC Racing")

NAME: _____ CMSC CLUB: _____
ADDRESS: _____
CITY: _____ ZIP _____ CMSC RACE CLASS: _____
HOME PHONE: _____ WORK PHONE: _____
EMAIL: _____



Holiday Valley I

**Western NY. Resort
With the Lewis Ski Club
Friday January 6th 2012**



\$69/per person

Includes: Round-trip transportation from Cleveland to Holiday Valley Ski Resort including breakfast snacks on the bus, 8 hour adult lift ticket, après ski dining in Ellicottville, where you are on your own for dinner.

FIRST TRIP OF 2012

Itinerary: 6:00AM Leave NASA DEB Parking Lot (North side of Brookpark Rd.)

6:30AM East Side Pickup - Home Depot Parking Lot on Wilson Mills Rd.,

1/2 Mile West of 1-271. DO NOT PARK IN DENNY'S

10:00AM Arrive at Holiday Valley Ski Area

4:45PM Bus leaves for Ellicottville for dinner (\$\$ of dinner not included)

7:30PM Bus Leave for Cleveland

10:30PM East Side Drop-off 11:00

PM Bus Arrives at NASA



Make Checks payable to: Lewis Ski Club, Inc

Send deposit check, signed Lewis Ski Club Trip Application form to:

Allen Porter

2860 N. Bay Drive, N7

Westlake, OH. 44145

Questions:

holidayvalley-jan2012@lewisskiclub.org

Phone: 440-476-1531

*Must be a member of the NASA Lewis Ski Club - \$10 single/ \$15 family (separate check) Membership information at <http://www.lewisskiclub.org/membership>

~ Reservations are first come first serve with full payment

~ No refunds made for your bus seat, unless your spot is filled.

~ Every skier must sign the **Lewis Ski Club Trip Application form**

~ Minors (under 18) not accompanied by parent or legal guardian must have a **Minor Release Form.**

~ Please Download form at www.lewisskiclub.org

~ No smoking on the bus

Seven Springs Ski Trip

With the Lewis Ski Club

Friday January 20th 2012

\$61 per person (Lift ticket and bus)



Includes: Round-trip bus transportation from Cleveland to Seven Springs, PA. One full day of skiing with breakfast snacks on the bus. You are on your own for dinner.

Itinerary: 6:00 AM Leave NASA DEB Parking Lot (North side of Brookpark Rd.)

6:30 AM East Side Pickup – *Lowes at 24500 Miles Road in Warrensville Heights*

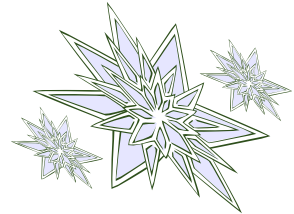
10:00 AM Arrive at Seven Springs Ski Area

Ski all day, après ski and dinner in lodge (on your own)

7:00 PM Bus Leaves for Cleveland

10:30 PM East Side Lowes Drop-off

11:00 PM Bus Arrives at NASA



Trip Information:

Questions?

Please call : Lisa Ferenc at GRC 216-433-6592 or home at 440-937-5173
or Dave Root at 216-433-2853

Email: sevensprings2012@lewisskiclub.org

Send deposit check and Trip Application form to:

**Lisa Ferenc
NASA GRC
21000 Brookpark Road, MS 60- 2
Cleveland, OH 44135**

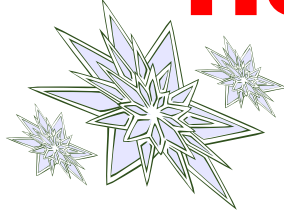
***Lewis Ski Club membership is required.**

New Members: single \$10 / Families \$15 (separate check)

Membership information at <http://www.lewisskiclub.org/membership>

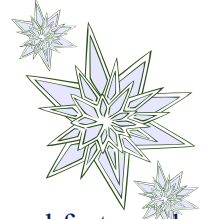
- ~ If not currently a Lewis Ski Club Member, please include Membership Fee and Membership Application Form.
- ~ Reservations are 1st come 1st served with payment in full.
- ~ No refunds made for your bus seat, unless your spot is filled.
- ~ Every skier must sign a **Trip Application** form.
- ~ Minors (under 18) not accompanied by parent or legal guardian must have a Minor Release Form.
- ~ Forms available at www.lewisskiclub.org
- ~ No smoking on the bus.

Holiday Valley 2



Western NY. Resort With the Lewis Ski Club Friday February 3, 2012

\$69 per person (Lift ticket and bus)*



Round-trip transportation from Cleveland to Holiday Valley included. We will also provide breakfast snacks on the bus.

Itinerary: 6:00AM Leave NASA DEB Parking Lot (North side of Brookpark Rd.)
6:30AM East Side Pickup - Home Depot Parking Lot on Wilson Mills Rd.,
1/2 Mile West of 1-271. **DO NOT PARK IN DENNY'S**
10:00AM Arrive at Holiday Valley Ski Area
4:30 Optional group dinner at John Harvard's Brew Pub in the Tamarack Club
or keep skiing until lift ticket expires ~6pm
7:00PM Bus Leave for Cleveland
10:00 PM East Side Drop-off
10:30 PM Bus Arrives at NASA

Club membership is required: New Members: single \$10 / Families \$15
Group rental discounts available.

New itinerary:

**Optional Group Dinner is at HV at John Harvard's at The Tamarack Club
or eat on your own (\$\$ of dinner not included)**

**We will not be taking the traditional trip to Ellicottville so that skiers and riders will
have the option of getting in more runs.**

Leave Holiday Valley at 7pm.

Questions?

Please contact: **Jan or Ray Neumann**

Email: holidayvalley-feb2012@lewisskiclub.org

Make Checks payable to: **Lewis Ski Club, Inc.** and mail along with Trip Application form to:

**Jan Neumann
8351 Shady Lane
Broadview Hts., Ohio 44147**

- *Must be a member of the NASA Lewis Ski Club - \$10 single/ \$15 family (separate check)
- ~ Reservations are 1st come 1st served with payment in full.
- ~ No refunds made for your bus seat, unless your spot is filled.
- ~ Every skier must complete a **trip application** form
- ~ Please Download forms from www.lewisskiclub.org
- ~ Minors (under 18) not accompanied by parent or legal guardian must have a Minor Release Form.

The NASA Lewis Ski Club Presents...



Steamboat.

January 14 – 21, 2012

\$1,240 per person*

Trip Includes:

- Lodging – The Phoenix - 7 nights, 4 people per 2 bedroom, 2 bath condo
- Lift tickets – 5 days of skiing at Steamboat (Ski 6th day for only \$42 more)
- Roundtrip airfare from Cleveland to Hayden (Steamboat airport)
- Ground transportation from airport to lodging and back to airport
- Free shuttle service into town and around resort, heated garage for ski storage
- Complimentary welcome party
- Walk to lifts

Payment schedule:

\$450 due now, non-refundable

\$400 due by September 15, 2011

\$390 due by November 1, 2011

Send deposit check with trip application and agreement form to:

Lori Manthey
319 Brookshire Oval
Hinckley, OH 44233

Make checks payable to:

Lewis Ski Club, Inc.

Trip Leaders:

Lori Manthey 216-633-7143

Shelli Sharp: 440-915-5361

Steamboat2012@lewisskiclub.org

Note: Must be a member of the Lewis Ski Club. For membership forms, visit our website at <http://www.lewisskiclub.org>

\$10 single/\$15 family
(please send a separate check for membership)

Optional Trip Insurance Available

*The price does not include any additional fuel surcharges, baggage fees, or airport fees which may be imposed prior to the date of travel.

Ski North Lake Tahoe **Squaw Valley & Alpine meadows & Northstar** **with the NASA Lewis Ski Club**

Sat Feb 11 - Sat Feb 18, 2012

\$1224 per person includes:

Lodging – Silver legacy casino, Reno, Nevada

***7 nights (Sat. to Sat.), dbl occ. per room.**

***Lift tickets – 5 days (3 days Squaw Valley, 1 days Alpine Meadows, 1 days Northstar)**

6th day skiing to any resorts is available for an additional cost

***RT Airfare from Cleveland to Reno on American Airline**

***RT Ground transportation from Reno Airport to the Silver Legacy**

***RT Ground transportation from Hotel to Ski Resorts.**

**** Complimentary welcome party upon arrival.**

**** Complimentary breakfast daily.**

**** Complimentary closeout party at the end of the week.**

**** Indoor HEATED pool, LARGE hot tub.**

As always, complimentary parting gifts and raffle items on the bus ride home!!!

Trip leaders: Tom Vannuyen (216-433-3851 work) (440-376-1503 cell)

Dave Root (440-454-0475 cell)

E-Mail: tahoe2012@lewisskiclub.org

Payment schedule:

\$408 Due now, non-refundable

\$408 Due by September 16, 2011

\$408 Due by December 9, 2011

Send deposit check and trip agreement form to: Tom Vannuyen

21000 Brookpark Rd MS 86-12

Cleveland, OH 44135

Make Checks payable to: Lewis Ski Club, Inc.

Note: Must be a member of the NASA Lewis Ski Club - \$10 single/ \$15 family.

***** For additional information, trip application, and membership forms, please visit our website at:**

<http://www.lewisskiclub.org>

*** The price does not include any additional fuel surcharges, baggage fees, or airport fees which may be imposed prior to date of travel.**

Washington Hut Hopper

by NASA Lewis Ski Club
Feb. 25th 2012 – Mar. 4th 2012



Rendezvous Huts

Payment: \$700 per person*

Airfare Extra*, ~\$500 - \$650
\$350 Due by Dec 1
\$350 Due by Jan 13

Send Trip Application & Agreement
Form and Payments to:

Lewis Ski Club
Trip: WA Hut Hopper
21000 Brookpark Rd.
Cleveland, OH 44135

Make Checks Payable to:
"Lewis Ski Club, Inc."

Trip Includes:

Lodging: 4 Nights Huts + Meals,
2 Nights Cabin, 2 Nights Hotel

Ground Transportation to Nordic
Trail System from Spokane, WA

Trail Passes: Six Days on the
Methow Valley Nordic Trail System &
Options for Off-Trail Travel

Trip Leaders:

Aaron Swank, Carl Blaser
huthopper2012@lewisskiclub.org
216 369 7542

* Price does not include any additional fuel surcharges,
baggage fees, or airport fees which may be imposed
prior to date of travel. Airfare extra, to be arranged.
Lewis Ski Club Membership Required. For membership
forms, visit the club website at <http://lewisskiclub.org>

© Lewis Ski Club, Inc. Cleveland, OH

<http://lewisskiclub.org/huthopper2012>

Additional Trip Details

Hut Hopper Trip between the 5-hut system in North Cascades near Winthrop, WA at 4000 ft elevation.

This is an eight person ski trip, primarily for traditional cross country skiing and skating with opportunities to use telemark skis, and venture off-trail by ski or snowshoe.

This trip is considered intermediate level for skiing and winter travel skills. Although the trails are typically groomed, participants must be comfortable skiing on un-groomed terrain.

Travel will be primarily on the Rendezvous trail system, consisting of 25 km groomed trails with additional off-trail snow opportunities. Trip also includes the opportunity to enjoy an additional 200 km of groomed trails on the Methow valley trail system.

Trip lodging itinerary: 1 night hotel, 4 night huts (3 different huts-Heifer, Cassal, Cassal, Rendezvous) 2 nights cabin in Methow Valley, 1 night hotel. Dinner in the Huts will be cooked and organized as a group, while breakfast and lunch will be based more on individual basis when trip itinerary permits.

Approximate distance between the Rendezvous Huts:

Cub Creek Parking to Heifer: ~6 miles
Cassal to Rendezvous: ~3.8 miles

Heifer to Cassal: ~9.1 miles
Rendezvous to Cub Creek Parking: ~6 miles

**Weekend Trip March 2nd through the 4th, 2012.
Laurel Hills Lodge in Laurel Hill State Park
Located in Somerset County PA.**



Join the NASA Lewis Ski Club for a Weekend Trip to this spacious lodge located in the beautiful Laurel Highlands. It's the perfect trip for cross country and downhill skiers and even those who don't do either as it's located close to all kinds of cross country trails, Seven Springs, Hidden Valley and many other attractions. You can find more information about the Laurel Highlands at their website @ www.laurelhighlands.org

The lodge holds a maximum of 14. Bedding preferences will be honored on a first come/first serve basis. Cost is only \$90 per person. This includes the lodging, breakfast each morning and a Saturday night dinner. You are on your own for lift tickets, trail fees and transportation. Bring your own bedding. For more information on the lodge and what it includes, see their website at www.dcnr.state.pa.us/stateparks/parks/laurelhill/laurelhilloodge.

Contact Therese Telzrow at 216.548.0359 for more information. To sign up, complete a Trip Application and mail it along with your check payable to Lewis Ski Club and send it to:

Therese Telzrow, 1203 Ethel Ave, Lakewood OH 44107

ANNOUNCING:

JAY PEAK & Stowe

VERMONT

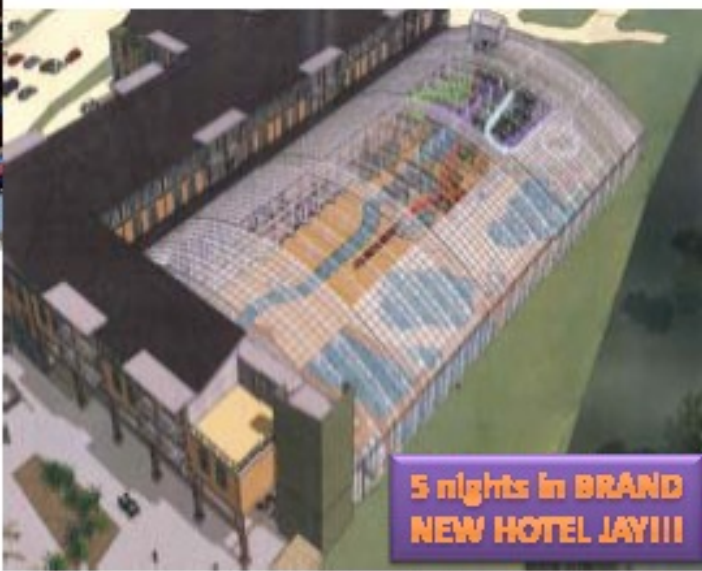
MARCH 18-24, 2012



BROUGHT TO YOU BY:



ONLY \$899!!!



5 nights in BRAND NEW HOTEL JAY!!!

PACKAGE INCLUDES:

- ❖ Luxury accommodations including Breakfasts (5) & Dinners (6) with choice of several restaurants
- ❖ 5 Days of lift tickets (1 Day Stowe)
- ❖ Open ice skating (pre-set times), fitness center, wireless internet
- ❖ New, 60,000 sq. ft. indoor water park with hot tubs, lazy river, swimming holes, flow rider surfing, water slides, and mezzanine bar & restaurant (unlimited access only \$50 for the entire week!!!)
- ❖ 2 hour daily group lessons at Jay Peak
- ❖ Round-trip motor-coach transportation
- ❖ Parties, drinks, snacks & prizes

See reverse for more information and sign-up instructions

Bus Transportation

Our bus leaves early Sunday AM, March 18th, from the Holiday Inn, on Beta Dr. in Mayfield Heights, just east of I-271 at the Wilson Mills Road Exit. The amenities on the bus include a large selection of breakfast items, a gourmet box lunch via Whole Foods, and snacks and beverages available throughout the trip. The bus returns on Saturday AM, March 24th.

About Jay Peak

Jay Peak, with a vertical of 2,153 feet, is located in northern Vermont a few miles from the Canadian border. It has been known for its unbelievable terrain, incomparable glades, and abundant natural snowfall. It has the most snow in eastern North America, averaging 355" per year. Vermont's only aerial tramway is one of 8 lifts accessing 385 acres of terrain, including 76 trails and 4 terrain parks for skiers and riders of all abilities. Jay Peak's boundary-to-boundary woods policy makes it a favorite among advanced skiers and riders but the glades aren't for experts only. The mountain also has the most beginners and intermediate tree skiing in the East. Check out Jay: <http://www.jaypeakresort.com>

About Stowe Mountain

Longest Vertical Drop: 2,160'; Total Number of Trails: 116 (16% beginner, 59% intermediate and 25% expert); Skiable Acres: 485; Total Lifts: 13

RESERVATIONS:

Make check payable to your chosen ski club & mail to the appropriate club rep below with a completed Application & Agreement form.

PAYMENT SCHEDULE:

\$300 Deposit	November 1, 2011
\$300	December 1, 2011
\$299	January 1, 2012

	 NASA Lewis Ski Club	
http://xnone.com/erieshoreskiclub.org	www.lewisskiclub.org	www.suburbanskiclub.org
Mike Hexter	Shelli Sharp	Joe Sullivan
440-590-5990 between 8:30a & 8:30p only	440-915-5361	216-932-3636
michaelhexter@ howardhanna.com	jaypeak2012@ lewisskiclub.org	president@ Suburbanskiclub.org
1693 Elm Drive Avon, OH 44011	2744 Hampton Rd Rocky River, OH 44116	2775 Derbyshire Rd Cleveland Hts, OH 44106



NASA LEWIS SKI CLUB MEMBERSHIP (October 1st to September 30th)

Name: (First)
 (Last)
 Home Phone:
 Work Phone:
 Address:

NASA Lewis Ski Club publishes a Member Directory containing names, addresses, email addresses, and phone numbers of the members. It is in hard copy only and made available at meetings and upon request of other club members only. Do you consent to having your contact information included? Yes No

NASA Mail Stop: (If applicable) Birthday: Month / Day (optional)

Email Address:

(Note: Club Newsletter is only sent via email/web to reduce both labor and postage)

Do you also wish to be added to an email list for impromptu, last-minute outings. Yes No

Type of Membership: (Check TWO)

- Single (\$10) New Member
 Family* (\$15) Renewal**

* A FAMILY MEMBERSHIP is defined as: "a member and spouse and/or DEPENDENT children".

** Renewal rates for current members increase after November 15th to \$15 for single and \$20 for family. New members pay the lower rate no matter when they join.

List Eligible Family Members:

Name	Age (Kids Only)	Birthday (M/D)
<input type="text"/>	<input type="text"/>	<input type="text"/>
<input type="text"/>	<input type="text"/>	<input type="text"/>
<input type="text"/>	<input type="text"/>	<input type="text"/>
<input type="text"/>	<input type="text"/>	<input type="text"/>
<input type="text"/>	<input type="text"/>	<input type="text"/>

Release: I/We, single/family membership, acknowledge that many of the activities and events organized and sponsored by the Lewis Ski Club, Inc., in particular participation-type athletic activities, are dangerous and hazardous and can cause damage, injury and death. In consideration of becoming a member and/or renewing my membership I/we assume any and all risks of participating in such activities, including the risk of damage, injury and death, and I/we release Lewis Ski Club, Inc., its members and officers, from responsibility and liability therefore. This Release shall remain in effect while I/we am/are a member(s) and when and while I/we participate in any such activity, and even if Lewis Ski Club, Inc. is negligent.

Signed in Agreement: X _____ Date: _____

(Complete and return with dues to Lisa Ferenc, MS:60-2, NASA Glenn Research Center, 21000 Brookpark Road, Cleveland, OH 44135 - Make checks payable to: Lewis Ski Club, Inc.)

Lewis Ski Club Trip Application and Agreement

The undersigned participant applies to participate in the Lewis Ski Club trip described below, subject to the following terms and conditions:

1. **DEPOSIT:** The required initial deposit for this trip must be paid and submitted along with a signed Trip Application and Agreement. Balance shall be due and payable in accordance with payment schedules established by Lewis Ski Club.
2. **WITHDRAWAL & CHANGE:** Lewis Ski Club may withdraw any trip from its schedule at any time; may refuse to accept or retain any person as a participant at any time for any reason; and may change the itinerary at any time.
3. **RESPONSIBILITY:** Lewis Ski Club is acting gratuitously for the applicant and shall not be responsible or liable for any loss of damage to baggage, property, or for any loss, injury, death, accident, delay, inconvenience or any other loss occurring during or occasioned by applicant's participation or lack of participation in any trip. Trip participants ski and/or snowboard at their own risk. It is the injured skier's/snowboarder's responsibility to report to Ski Patrol for treatment or referral to hospital/doctor. If unable to accompany the club on return trip as planned, the injured party is responsible for arranging their own transportation for the return trip.
4. **IDENTIFICATION:** Each participant is responsible for having and taking with them a valid, current, government-issued, photo ID. For trips out of the USA, participants are responsible for having up-to-date and valid passport. When required, participants are also responsible for having up-to-date and valid visa(s).
5. **MINORS:** Any minor's participant Trip Application and Agreement must be co-signed by his/her parent or legal guardian. The minor must be accompanied on the trip by a parent or legal guardian or their designee who shall be wholly and fully responsible for said minor's conduct and well being.
6. **PAYMENT:** All payment checks shall be payable to "Lewis Ski Club, Inc."
7. **CANCELLATION:** If the participant cancels out of the trip, then the participant forfeits their rights to any and all payments made to Lewis Ski Club for this trip. Cancellation by participant means and includes: (a) failure to abide by the terms of this agreement; (b) notice by participant of intent to cancel; (c) participant's failure to make timely payments; (d) participant's failure for any reason to meet departure or return of the trip.
8. **ELIGIBILITY:** Lewis Ski Club membership is required to participate.
9. **EXTRA FEES:** Price does NOT include any additional fuel surcharges, baggage fees, or airport fees which may be imposed prior to the date of travel.

Trip Name:

Applicant Name:

(For Airline Ticketing MUST be as it appears on Drivers License/Passport)

Address:

Phone: (H) (W) (Cell)

Email Address:

Required for Airline Ticketing:

Date of Birth: (MM/DD/YYYY)

Required for Bus Trips: Pickup Location

West OR East

Lewis Ski Club Member? Yes No (If NO, Please Include Membership Application Form)

Optional Trip Insurance? Yes No (For Extended Trips. If YES, Information will be sent to you.)

Trip Specific Info:

Emergency Contact Information:

Name:

Phone: (H) (Cell)

I have read and agree to all the terms of this Agreement, and waiver of liability, as of this date.

Signed in Agreement: _____ **Date:** _____

Signed in Agreement: _____ **Date:** _____

(Signature of parent or legal guardian if participant is under 18)