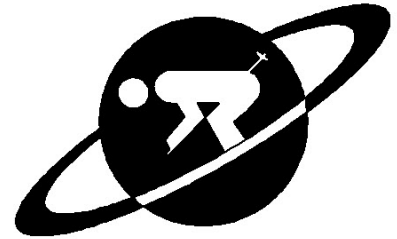


September 2009

# NASA Lewis Ski Club



Next Meeting:

Meet & Greet

Tuesday, September 1, 2009

100th Bomb Group

20920 Brookpark Road

Cleveland, Ohio

Happy Hour @ 5 PM Meeting @ 6 PM

Next Board Meeting:

Tuesday, September 22

Panera Bread, Brooklyn

## Inside:

President's Message.....	2
Trip Plans.....	2
Activities .....	3
Club Volunteer.....	3
Nordic News.....	4
Picnic Report .....	4
Cultural Gardens.....	4
Hike Flyer.....	5
Train & Bike Flyer.....	6
Wine Tasting.....	7
Rafting Flyer.....	8
Park City Flyer.....	9
Telluride Flyer.....	10
Laurel Hill Lodge Flyer.....	11
Laurel Hill Agreement.....	12
Membership Renewal.....	13
Trip Agreement.....	14

Skiing Magazine this week, can the first flake be far behind

## Meeting Activity:

Social Hour

Business Meeting



Rocky's River Pour House has succumbed to the economic times and we were forced to find a new meeting location. **We are now meeting at the 100th Bomb Group**

NASA Lewis Ski Club  
Trip Plans and Flyers  
Activity Flyers  
Renew Membership



**P**resident's message... The annual ski club picnic was great fun this year, with nearly 100 people in attendance. It was a beautiful evening, the food was good, and we had a fun group of people coming.

Congratulations to Lisa Lambert, this year's The Racer of the Year Award winner! And, we crowned Stacey Bagg the NASA Lewis Ski Queen! Good luck, Stacey, in the Cleveland Metro Ski Council (CMSC) Ski Queen competition this Fall.

Thank you to Annie Easley, who served as this year's picnic chair, and to Lisa Ferenc who sold tickets and worked hard all evening collecting money, to Tom Jones who did much of the work on the day of the picnic, to Joe Gruden who contributed his ever popular home brew, to Teresa Monaco for organizing the games, to the officers and trustees who promoted the picnic, and to so many others who made the picnic a great success. Thank you all!

Ski Club summer and fall events are still happening, so please check out the listing in this newsletter. Our trip to Park City this winter has sold out, but there are still slots left on our trip to Telluride - so sign up soon because it promises to be an awesome winter vacation.

We have a new location for our meetings—The 100th Bomb Group on Brookpark Road near NASA. We were scrambling to find a new location when we learned that Rocky's River Pour House became too poor and is no longer in business. But I think that the new location will be even better—easy access to the highway, close to NASA, fun atmosphere, good beer, our own room for the meeting, and great appetizers.

I hope to see you at the meeting!

Lori

### 2010 Trip Plans

January 8: Holimont 1

January 22: Holiday Valley 1

TBD Nordic/Alpine combined trip, Peak-n-Peak/Wilderness lodge  
January 23-30: Telluride, CO (Flyer out- hurry to reserve your seat!)

February 5: Kissing Bridge

February 19: Holimont 2

March 5: Holiday Valley 2

March 20-27: Park City, Utah (Sold out!)

If you are interested in running a day trip please let me know! You can email me at [Stacey.d.bagg@nasa.gov](mailto:Stacey.d.bagg@nasa.gov) or call at (216) 433 3792.

---

## Officers of Lewis Ski Club

### **SKI CLUB OFFICERS**

President: Lori Manthey ([Lori.A.Manthey@nasa.gov](mailto:Lori.A.Manthey@nasa.gov))  
Alpine V.P.: Stacey Bagg ([staceybagg@gmail.com](mailto:staceybagg@gmail.com))  
Nordic V.P.: Teresa Monaco ([teresa.l.monaco@nasa.gov](mailto:teresa.l.monaco@nasa.gov))  
Activity V.P.: Therese Telzrow (216-226-6013)  
Recorder: Janet Dubas (216-741-3161)  
Publicity Director: Eric. McFarland ([mcflnd@cox.net](mailto:mcflnd@cox.net))  
Treasurer: Jan Neumann ([janetteneumann@sbcglobal.net](mailto:janetteneumann@sbcglobal.net))

### **COMMITTEE CHAIRS**

CMSC Rep: Frank DiMarco ([fpdimarco@yahoo.com](mailto:fpdimarco@yahoo.com))  
Refreshment: Tom Jones (216-433-3718)  
Sunshine: Colin Bidwell (216-433-3947)  
Social: Kathleen Moran ([grossman@cox.net](mailto:grossman@cox.net))  
Racing: Mark Hyatt (216-433-3248)  
Membership: Lisa Ferenc (216-433-6592)  
Web Curator: Linda Elonen-Wright (216-433-9370)  
Alternate Web Curator: Lisa Lambert ([Lisa.Lambert@nasa.gov](mailto:Lisa.Lambert@nasa.gov))  
Trip: Annie Easley (440-816-1215)

**TRUSTEES:** Mark Hyatt (216-433-3248), Annie Easley (440-816-1215) & Mike Kaltenstein (330-483-4841)

### **NASA Lewis Ski Club Activities**

Weekly Bike Rides in the Cleveland Metroparks: Every Wednesday at 7 pm in front of Sweetwater's at the Eddy's Boat Dock Parking Lot (in the Rocky River Reservation by the Detroit Road, Lakewood entrance). This is a moderately paced ride on the path (we don't ride on the road). We may ride outside of the Metroparks in and around Rocky River and Lakewood. Contact Therese at 216.226.6013.

Wine Tasting Friday Sept 18 from 6 - 8 pm at WineStyles in Fairview Park. Cost of \$10 includes appetizers and tasting. Contact Jan Neumann at 440.237.2084.

Bike and Train Ride in the Cuyahoga Valley National Park. Sunday September 27<sup>th</sup>. Meet at the Brecksville Reservation Depot at 11:30 am. We'll ride our bikes from there to Peninsula where we'll have lunch and take the train back. The train ride costs only \$2 as long as you bring your bike, otherwise it's \$15. Contact Therese Telzrow at 216.226.6013

Penitentiary Glen Reservation Hike on Saturday, October 3, 2009 at 1:00pm. RSVP by Thursday, October 1, 2009 to Teresa Monaco at 216.433.8293 or [Teresa.L.Monaco@nasa.gov](mailto:Teresa.L.Monaco@nasa.gov).

White Water Rafting In West Virginia Oct 10, 11<sup>th</sup> and 12<sup>th</sup> (Columbus Day Weekend). Don't miss out on the exciting adventure call Linda Elonen-Wright at 216.433.9370 or Email Frank DiMarco at [fpdimarco@yahoo.com](mailto:fpdimarco@yahoo.com). See the flyer in this newsletter.

Laurel Hills Lodge Halloween Weekend Oct 30,31 Nov 1<sup>st</sup>. Spend the weekend in at this spacious lodge located in the Laurel Hills State Park in Somerset County PA. See the newsletter Contact Ray Neumann at 440.237.2084 or Janet Dubas at 216.741.3161. See the flyer in this newsletter..

Therese Telzrow Activities VP 216.226.6013.

### **WHAT MAKES NASA LEWIS SKI CLUB 'RUN'?**

People who are willing to volunteer lots of time so that many others can have fun are extremely important to the NASA Lewis Ski Club. An example of the fun makers are those who worked to put on or pull off the annual ski club picnic. The picnic attendees are also an important part of the fun. For several years the annual picnic has been held at the W.J. Green Lodge in the Metroparks. The next year's picnic preparations start almost as soon as we have cleaned up and put out the garbage and the lights for the night.

Some of the volunteers for the August 4, 2009 picnic were Matt Dubas who bagged the peanuts this year as well as past years. John Ballasch helped by opening the bags so that Matt could fill them with roasted peanuts in the shell. This was a real production line. Frank DiMarco and John Carson donned the plastic gloves and filled the party mix and potato chip bowls. A big thank you to Cheryl Alden who has shopped for the vegetarian meal for several years. She always says yes with a smile when asked to help us with ski club stuff.

One of our long time volunteers needs to be highlighted this year. His name is Tom Jones. Tom has shopped for picnic supplies for just about every picnic at the W.J. Green Lodge. He tends to keep a very low profile and many of the picnic people may or may not know him. This year Tom very willingly said yes when I called upon him to do triple duty. Oh, maybe I begged a bit before he said yes. He shopped for all the beer, pop, water and ice. In the past those items were purchased by three different people. Tom brought several coolers and filled them before others arrived to ensure that the beverages would be cooled. He also single handed setup the tables and chairs in the inside pavilion. I'm sure that he kept an eye on things during the picnic. At the end of the night, Tom was still there as in past years to make sure that every thing at the W.J. Green Lodge was in order. The tables and chairs that Tom had set up before the picnic were now folded and stacked in the inside pavilion single handed again. I know he did these things because I was there.

In the past, Tom served as treasurer of the NASA Lewis Ski Club. For many years he also arranged for the refreshments at monthly club meetings. He has also run other fun events for the club such as white water rafting. A huge thanks to Tom for the many years that he has done so much for the NASA Lewis Ski Club. He's truly an example of WHAT MAKES NASA LEWIS SKI CLUB 'RUN'. Article by Annie Easley (Picnic Chair)



### Nordic News

Linda Elonen-Wright and Dianna Hosta-Stickney have agreed to run a combined Nordic (Wilderness Lodge)/Alpine (Peek'n Peak) ski trip. Date still to be determined, but possible dates include January 16, 2010 or February 13, 2010.

Teresa Monaco, VP Nordic Skiing

### NASA Lewis Ski Club Picnic

We had a great time playing games at the picnic. We borrowed a corn-hole game from NASA Glenn Research Center Community and Relations Office. We had several challenges in playing the game. *We only had 7 bean bags (instead of 8), and all the bean bags were the same color! The Plexiglass sheet covering the awesome NASA graphics made the bean bags slide, but the contestants still managed to enjoy some high-scoring games.* Tom Vannuyen organized a rousing game of beach volleyball (he just wanted to show off his rippling abs). Teresa Monaco arranged games for the kids (and 1 adult) to enjoy: tug-of-war, egg toss, and balloon relay. The games were messy (broken eggs, but Teresa had water, towels, and hand sanitizer to clean up any spills), loud (the popped balloons sounded like firecrackers going off), and energetic (the tug-of-war is a great workout!). The kids didn't want to leave the picnic, they



**Lisa, Racer of the year**  
were having so much fun.

Thanks to Tom Jones for transporting the corn-hole game to and from the picnic site; Al Linne for lending us the rope for the tug-of-war also providing a horseshoe set; and Mikel Kaltenstein and Lisa Ferenc for blowing up balloons. Article by Teresa Monaco. Photos by Elise Allen

**Joe enjoys a fine domestic while "friends"  
Therese & Mark consume Joe's custom brew**



### Cultural Gardens Tour

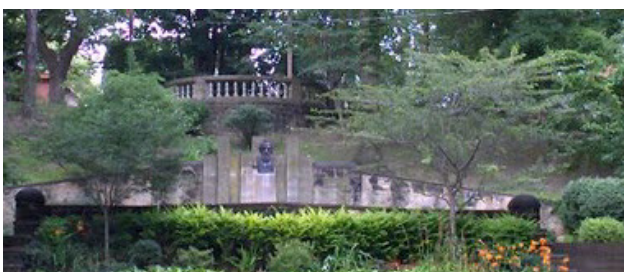
#### *A Walk Amongst The Bronzes*

Several of the Club members took advantage of the nice weather on the evening of July 30 to take a brisk walk amongst the bronze statues and monuments located in the Cleveland Cultural Gardens. Paul Burik conducted the

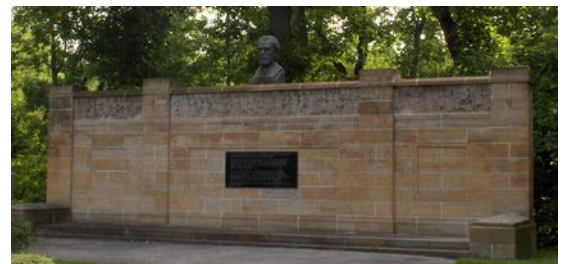


tour, describing the personalities depicted in the numerous nationality gardens; scientist Madame Curie and astronomer Copernicus in the Polish Garden, composers Dvorak and Smetana in the Czech Garden, the delightful fountains in the Italian and Hungarian Gardens, large statue of

Ghandi in the India Garden. Those were just few of the monuments



seen as we  
walk along



East Blvd, south of St. Clair Ave to the newly restored Irish Garden and then back north along MLK Blvd. The two hour walk was enjoyed by all. Article by Paul Burk. Photos by Therese Telzrow

**Event: Penitentiary Glen Reservation (Lake Metroparks) Hike**

**Date: Saturday, October 3, 2009**

**Time: 1:00-3:30pm**

**Location:**

Penitentiary Glen Reservation

8668 Kirtland-Chardon Rd.

Kirtland, Ohio 44094

(440) 256-1404

<http://lakemetroparks.com/select-park/penitentiaryglen.shtml>

Meeting place: Inside the nature center, by the front desk

RSVP: By Thursday, October 1, 2009 to Teresa Monaco (phone 216.433.8293 or e-mail [Teresa.L.Monaco@nasa.gov](mailto:Teresa.L.Monaco@nasa.gov)).

**Description of hike:**

5 miles round trip, moderate, stairs and hills, 2 to 2-1/2 hours.

**Equipment for hike:**

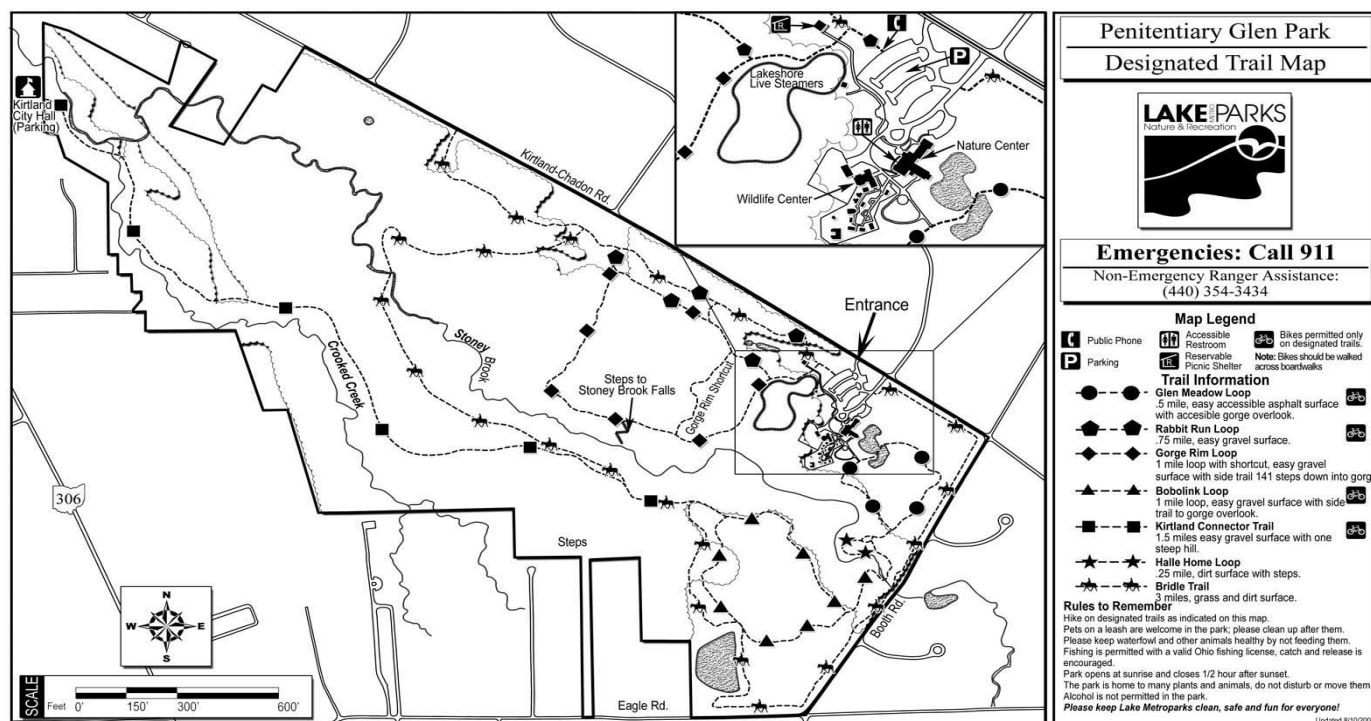
- |                                    |   |
|------------------------------------|---|
| 1. Raingear (depending on weather) | 6. Water  |
| 2. Mosquito repellent              | 7. Snack (optional)   |
| 3. Wide brimmed hat                | 8. Hiking boots   |
| 4. Sunscreen                       | 9. Socks (preferably no cotton)   |
| 5. Sunglasses                      | 10. Jacket (depending on weather;<br>waterproof/water repellent if necessary) |

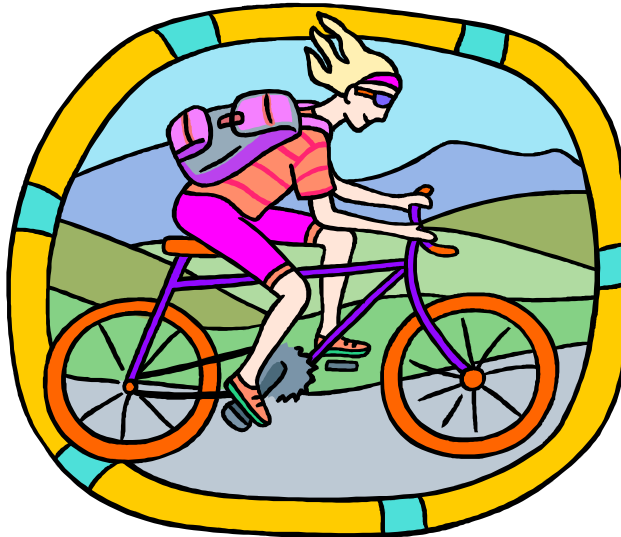
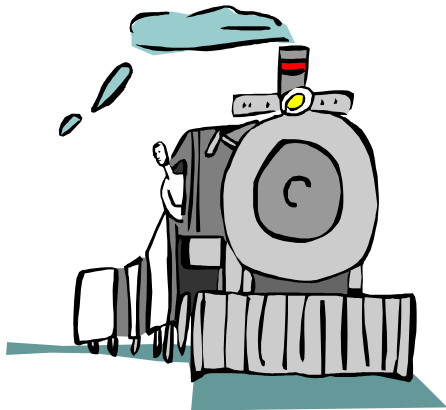
**Directions:**

Take I-90 to Rt. 306 south for about one mile. Turn left onto Rt. 615. Turn right (east) onto Kirtland-Chardon Road and continue for two miles. Penitentiary Glen Reservation is located on the right (south) side of the road.

Attached is a trail map to Penitentiary Glen. The website for the trail map is:

<http://lakemetroparks.com/parks/PGTrailMap.pdf>





**BIKE AND TRAIN RIDE with the NASA Lewis Ski Club  
Sunday September 27th  
In the Cuyahoga Valley National Park via the  
Cuyahoga Valley Scenic Railroad and their Bike Aboard program.**

Bicycle along the towpath trail from the Brecksville Depot to Peninsula. We'll stop and have lunch or sightsee in this picturesque town and then hop aboard the train and ride back.

See the great views of this beautiful valley on bike and by train. On the train you'll be able to relax and enjoy views of the park that aren't visible from the towpath. By bike you'll be able to get up close to nature and get some exercise too.

Do you want to ride farther or just go for a short ride? Choose your distance by starting out at any one of the 10 depots located along the Towpath trail.

Meet up with us somewhere along the trail or at noon in Peninsula at the Winking Lizard. I'll have my cell phone with me on the ride so just give me a call and we'll set the meeting place.

Otherwise just meet at 11:30 at the Brecksville Depot located at 13512 Station Road, [Brecksville, Ohio](#) 44141. There's plenty of parking available.

Contact Therese Telzrow at 216.226.6013 or cell phone at 216.548.0359

# JOIN NASA LEWIS SKI CLUB FOR A PRIVATE WINE TASTING AT WINESTYLES

3140 Westgate, Fairview Park, Ohio



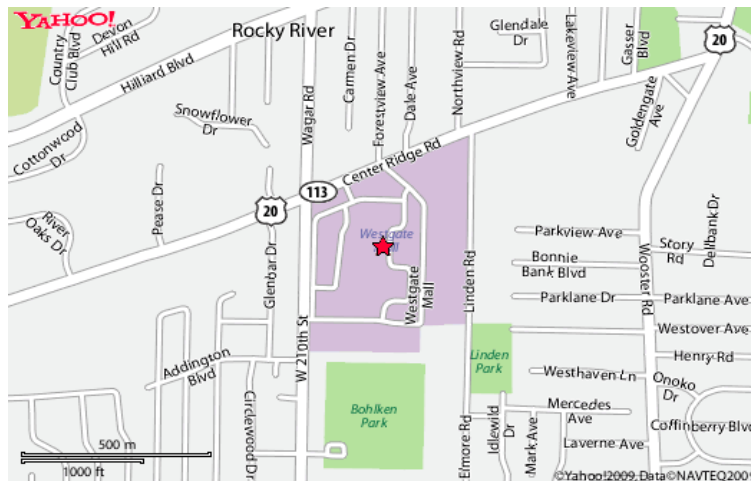
ON FRIDAY, SEPT. 18, 6-8PM

\$10 PER PERSON

Includes 6 wine tastes and light appetizers

This event, because it is private, requires advanced reservations and a minimum number of participants. You can reserve and pay at the September meeting or mail your check payable to “Lewis Ski Club” to Jan Neumann, 8351 Shady Lane, Broadview Hts., Ohio 44147.

Deadline for reservations is Tuesday, Sept. 15.  
Questions ? Email me at [janetteneumann@sbcglobal.net](mailto:janetteneumann@sbcglobal.net)  
or visit <http://www.winestyles.net/fairview>





## Whitewater Rafting the Lower Gauley River

October 10-12, 2009 (Saturday – Monday)

Outfitter: ACE Adventure Center in Oak Hill, WV.

### Build your own trip!

Camping (2 nights in Ace's private campground) & pig roast dinner on Sunday night after rafting

.....adult \$ 45 \_\_\_\_\_

.....youth \$ 33 \_\_\_\_\_

Sunday Lower Gauley River (class III-V+ rapids [min. age 15], Roundtrip river shuttle and lunch on river)

.....adult \$ 99 \_\_\_\_\_

.....youth \$ 89 \_\_\_\_\_

Or, Sunday on the Upper New River (in duckyies! Great intro to white water rafting with up to class III rapids [min. age 6], Roundtrip river shuttle and lunch on the river.....adult \$ 85 \_\_\_\_\_

.....youth \$ 49.50 \_\_\_\_\_

### Optional add-ons: (both last about 2.5 hrs.)

Monday morning Horseback ride (max. weight of 250 lbs.)..... \$ 60 \_\_\_\_\_

Or, Monday morning Canopy Tour (Zip – lining! Min. age 12)..... \$ 70 \_\_\_\_\_

Grand Total: \_\_\_\_\_

NAME: \_\_\_\_\_

ADDRESS: \_\_\_\_\_

PHONE: \_\_\_\_\_

Sign-up Deadline is September 5, 2009.

Fine print: \*\* Membership in Lewis Ski Club, Inc. required.

\*\* Please make checks out to **Lewis Ski Club, Inc.**

\*\* ACE Adventure Center is approximately 5-5.5 hrs. from Cleveland.

\*\* Must provide your own transportation. (Car pooling with others who are going may be possible!)

\*\* Cabin rental might be available if you don't have a tent. Contact Linda.

### Trip Coordinators:

Linda Elonen-Wright

Frank DiMarco

2256 South Overlook

14107 Ryan Drive

Cleveland Heights, OH 44106

Walton Hills, OH 44146

(216) 433-9370 or (216) 246-7912

(216) 475-8081



# Ski UTAH 's Park City & Canyons Snowbird



With the NASA Lewis Ski Club

Sat March 20 through Sat March 27, 2010

**\$1110.00** per person Includes:

**Lodging – The Yarrow Resort in Park City**

**7 nights (Sat. to Sat.), dbl occ. per room.**

**Lift tickets –5 days (2 at Park City, 2 at Canyons, 1 at Snowbird)**

**option for 1 more additional day of skiing at Park City is available.**

**RT Airfare from Cleveland. (Bag fees \$15 (1<sup>st</sup> bag) & \$25 (2<sup>nd</sup> bag) each way)**

**RT Ground transportation from Salt Lake City to Park City.**

**RT Ground transportation from Park City to Snowbird.**

**\*\* Complimentary welcome party upon arrival.**

**\*\* Complimentary full breakfast buffet (daily).**

**\*\* FREE shuttle stop in front of hotel.**

**\*\*Outdoor HEATED pool, LARGE hot tub.**

**As always, complimentary parting gift and raffle items on the bus ride home!!!**

**For sign - up, contact trip leaders:**

**Tom Vannuyen**

**440 -846-1736 home**

**216-433-3851 work**

**[Thomas.Vannuyen-1@nasa.gov](mailto:Thomas.Vannuyen-1@nasa.gov)**

**Dave Root**

**440427-1522 home**

**440-454-0475 cell**

**[David.R.Root@nasa.gov](mailto:David.R.Root@nasa.gov)**

## **Payment schedule:**

**\$370.00 Due now, non-refundable**

**\$370.00 Due by November 6, 2009**

**\$370.00 Due by January 1, 2010**

**Send deposit check and trip agreement form to:**

**Tom Vannuyen**

**21000 Brookpark Rd MS 86-13**

**Cleveland, OH 44135**

**Make Checks payable to: Lewis Ski Club, Inc.**

**Note: Must be a member of the NASA Lewis Ski Club - \$10 single/ \$15 family.**

**\*\*\* For additional information, trip application, and membership forms, please visit our website at: <http://lewisskiclub.org>**

# SOLD OUT

**Contact Tom Vannuyen to get on waiting list**

**Filling Up!  
Sign up ASAP**



**SKI TELLURIDE WITH THE NASA LEWIS SKI CLUB  
FOR INCREDIBLE ALPINE, NORDIC, SNOWBOARD,  
HELICOPTER SKIING AND BOARDING**

**January 23 - 30<sup>TH</sup>, 2010**

**\$1260**

**Don't Miss This Excellent Opportunity!  
It's The Best Price You'll Ever Get To Stay At Such Great Accommodations  
And To Ski This Fabulous Resort**

**Includes:**

- Lodging – At The luxurious Bear Creek Lodge in Mountain Village.
  - Each unit has 2 or 3 bedrooms, (each bedroom has its own luxurious bath), living room with fireplace, gourmet kitchen and laundry facilities.
  - Outdoor heated pool and three hot tubs.
- Lift Tickets – 5 of 6 day lift tickets
- Roundtrip transportation from Cleveland to Telluride
- Welcome Wine & Cheese Reception
- Fabulous Midweek Condo Party

Contact Therese Telzrow @ 216.226.6013 or [theresetelzrow@yahoo.com](mailto:theresetelzrow@yahoo.com) or  
Annie Easley @ 440.816.1215 or [ajeasl@sbcglobal.net](mailto:ajeasl@sbcglobal.net)

**Payment Schedule:**

\$420.00 Due now, (\$200 non-refundable)  
\$420.00 Due by September 15, 2009  
\$420.00 Due by November 15, 2009

**Send Check And Trip Agreement Form To:**

Therese Telzrow  
1203 Ethel Ave  
Lakewood OH 44107

**Make Checks payable to: NASA Lewis Ski Club**

**Note: Must be a member of the NASA Lewis Ski Club \$10 single/\$15 family  
(separate check for membership, please)**

**Trip Application and Agreement form are required.**

**Fuel surcharge may or may not be added by airline before ticketing.**

**Check directly with the airline for baggage information.**

SPEND HALLOWEEN WEEKEND AT  
LAUREL HILL LODGE IN LAUREL HILL STATE PARK



LOCATED IN SOMERSET COUNTY, PA

Dates: Friday October 30<sup>th</sup> to Sunday November 1st



***½ Full  
Sign Up Now***

This modern lodge gives you the feel of camping with all the conveniences of home, including heat and air conditioning. See the lodge website for details:

<http://www.dcnr.state.pa.us/stateparks/parks/laurelhill/laurelhilllodge.aspx>

Of course, there are many outdoor activities within the park such as hiking and wild life watching. In addition, the Laurel Highlands area boasts a wide variety of indoor and outdoor activities too numerous to list.

See website at: <http://www.laurelhighlands.org/> . Some of the most famous attractions are Frank Lloyd Wright's Falling Water and Kentuck Knob. Advance reservations are strongly suggested for both of these. Websites:

<http://www.fallingwater.org/> and <http://www.kentuckknob.com/>

Tentative plans for a Halloween Party at Seven Springs are in the works. The Western Pa Ski Council is awaiting confirmation from Seven Springs. More information will follow.

**The lodge holds a maximum of 14. Bedding preferences will be honored on a first come/first serve basis. Cost is only \$75 per person. This includes breakfast both mornings and incidentals such as firewood and charcoal. Contact Ray Neumann at 440-237-2084 / [moshmont01@yahoo.com](mailto:moshmont01@yahoo.com) or Janet Dubas at 216-741-3161 for more information.**

To sign up, mail **Laurel Hill Trip Application** along with a \$75 check payable to Lewis Ski Club to: Janet Dubas ,6800 Northcliff Avenue, Brooklyn, Ohio 44144.

## Lewis Ski Club Trip Application and Agreement for Laurel Hill Lodge Weekend

The undersigned participant applies to participate in the Lewis Ski Club trip described below, subject to the following terms and conditions: **NOTE: This is a standard agreement. Some conditions, such as those related to air travel, do not apply to the Laurel Hill Lodge Trip**

1. **DEPOSIT:** The required initial deposit for this trip must be paid and submitted along with a signed Trip Application and Agreement. Balance shall be due and payable in accordance with payment schedules established by Lewis Ski Club.
2. **WITHDRAWAL & CHANGE:** Lewis Ski Club may withdraw any trip from its schedule at any time; may refuse to accept or retain any person as a participant at any time for any reason; and may change the itinerary at any time.
3. **RESPONSIBILITY:** Lewis Ski Club is acting gratuitously for the applicant and shall not be responsible or liable for any loss of damage to baggage, property, or for any loss, injury, death, accident, delay, inconvenience or any other loss occurring during or occasioned by applicant's participation or lack of participation in any trip. Trip participants ski and/or snowboard at their own risk. It is the injured skier's/snowboarder's responsibility to report to Ski Patrol for treatment or referral to hospital/doctor. If unable to accompany the club on return trip as planned, the injured party is responsible for arranging their own transportation for the return trip.
4. **IDENTIFICATION:** Each participant is responsible for having and taking with them a valid, current, government-issued, photo ID. For trips out of the USA, participants are responsible for having up-to-date and valid passport. When required, participants are also responsible for having up-to-date and valid visa(s).
5. **MINORS:** Any minor's participant Trip Application and Agreement must be co-signed by his/her parent or legal guardian. The minor must be accompanied on the trip by a parent or legal guardian or their designee who shall be wholly and fully responsible for said minor's conduct and well being.
6. **PAYMENT:** All payment checks shall be payable to "Lewis Ski Club, Inc."
7. **CANCELLATION:** If the participant cancels out of the trip, then the participant forfeits their rights to any and all payments made to Lewis Ski Club for this trip. Cancellation by participant means and includes: (a) failure to abide by the terms of this agreement; (b) notice by participant of intent to cancel; (c) participant's failure to make timely payments; (d) participant's failure for any reason to meet departure or return of the trip.
8. **ELIGIBILITY:** Lewis Ski Club membership is required to participate.
9. **EXTRA FEES:** Price does NOT include any additional fuel surcharges, baggage fees, or airport fees which may be imposed prior to the date of travel.

**Print clearly** Trip: \_\_\_\_\_

Applicant Name: \_\_\_\_\_  
(MUST be as it appears on Drivers License/Passport (*for airline ticketing* ))

Address: \_\_\_\_\_  
\_\_\_\_\_

Phone w/area code:  
(H) \_\_\_\_\_ (W) \_\_\_\_\_ (Cell) \_\_\_\_\_

Email address: \_\_\_\_\_

In case of an emergency contact: (Name) \_\_\_\_\_

Phone w/area code: (H) \_\_\_\_\_ (Cell) \_\_\_\_\_

NASA Lewis Ski Club member? Yes / No (If NO, membership available for \$10-single/\$15-family)

Roommate preference: \_\_\_\_\_

Bed preference (shared double or twin bunk bed): \_\_\_\_\_ First come/first serve

I have read and agree to all the terms of this Agreement, and waiver of liability, as of this date.

Signed in Agreement: \_\_\_\_\_ Date: \_\_\_\_\_



## 2009-2010 NASA LEWIS SKI CLUB MEMBERSHIP

(October 1, 2009 - September 30, 2010)

Name:(first)\_\_\_\_\_ (last)\_\_\_\_\_

Home Phone:\_\_\_\_\_

Work Phone:\_\_\_\_\_

Home address:  
Street/Apt.:\_\_\_\_\_

City:\_\_\_\_\_ St: \_\_\_\_\_ Zip:\_\_\_\_\_

NASA Mail Stop(If applicable): \_\_\_\_\_

Your Birthday: \_\_\_\_/\_\_\_\_ (MONTH / DAY)

NASA Lewis Ski Club publishes a Member Directory containing names, addresses, email addresses, and phone numbers of the members. It is in hard copy only and made available at meetings and upon request of other club members only. Do you consent to having your contact information included?

YES \_\_\_\_\_ NO \_\_\_\_\_

NORDIC Skiers check box if you wish to be included on a notification list for impromptu nordic ski outings.

☐

<p>Type of membership: Check TWO Types)</p> <p>Single(\$10) _____ New Member _____</p> <p>*Family(\$15) _____ **Renewal _____</p> <p>*A FAMILY MEMBERSHIP is defined as: “a member and spouse and/or DEPENDENT children”.</p> <p><b>**Renewal rates for current members increase after November 15th to \$15.00 for single and \$20.00 for family. New members pay the lower rate no matter when they join.</b></p>	<p>Please list eligible Family Members:</p> <table> <thead> <tr> <th>Name</th> <th>Age-Kids Only</th> <th>Birthday (M/D)</th> </tr> </thead> <tbody> <tr> <td>_____</td> <td>_____</td> <td>____/____</td> </tr> <tr> <td>_____</td> <td>_____</td> <td>____/____</td> </tr> <tr> <td>_____</td> <td>_____</td> <td>____/____</td> </tr> <tr> <td>_____</td> <td>_____</td> <td>____/____</td> </tr> </tbody> </table>	Name	Age-Kids Only	Birthday (M/D)	_____	_____	____/____	_____	_____	____/____	_____	_____	____/____	_____	_____	____/____
Name	Age-Kids Only	Birthday (M/D)														
_____	_____	____/____														
_____	_____	____/____														
_____	_____	____/____														
_____	_____	____/____														

Email: We prefer to send the newsletter out via email since it reduces our work and postage costs. If you would like to receive the newsletter via email, please give your

email address: \_\_\_\_\_ (please print legibly)

**Release: I/We, single/family membership, acknowledge that many of the activities and events organized and sponsored by the Lewis Ski Club, Inc., in particular participation-type athletic activities, are dangerous and hazardous and can cause damage, injury and death. In consideration of becoming a member and/or renewing my membership I/we assume any and all risks of participating in such activities, including the risk of damage, injury and death, and I/we release Lewis Ski Club, Inc., its members and officers, from responsibility and liability therefore. This Release shall remain in effect while I/we am/are a member(s) and when and while I/we participate in any such activity, and even if Lewis Ski Club, Inc. is negligent.**

(Complete and return with dues to Lisa Ferenc, MS:301-4, NASA Glenn Research Center,  
21000 Brookpark Road, Cleveland, OH 44135 - Make checks payable to: Lewis Ski Club, Inc.)

## Lewis Ski Club Trip Application and Agreement

The undersigned participant applies to participate in the Lewis Ski Club trip described below, subject to the following terms and conditions:

1. **DEPOSIT:** The required initial deposit for this trip must be paid and submitted along with a signed Trip Application and Agreement. Balance shall be due and payable in accordance with payment schedules established by Lewis Ski Club.
2. **WITHDRAWAL & CHANGE:** Lewis Ski Club may withdraw any trip from its schedule at any time; may refuse to accept or retain any person as a participant at any time for any reason; and may change the itinerary at any time.
3. **RESPONSIBILITY:** Lewis Ski Club is acting gratuitously for the applicant and shall not be responsible or liable for any loss of damage to baggage, property, or for any loss, injury, death, accident, delay, inconvenience or any other loss occurring during or occasioned by applicant's participation or lack of participation in any trip. Trip participants ski and/or snowboard at their own risk. It is the injured skier's/snowboarder's responsibility to report to Ski Patrol for treatment or referral to hospital/doctor. If unable to accompany the club on return trip as planned, the injured party is responsible for arranging their own transportation for the return trip.
4. **IDENTIFICATION:** Each participant is responsible for having and taking with them a valid, current, government-issued, photo ID. For trips out of the USA, participants are responsible for having up-to-date and valid passport. When required, participants are also responsible for having up-to-date and valid visa(s).
5. **MINORS:** Any minor's participant Trip Application and Agreement must be co-signed by his/her parent or legal guardian. The minor must be accompanied on the trip by a parent or legal guardian or their designee who shall be wholly and fully responsible for said minor's conduct and well being.
6. **PAYMENT:** All payment checks shall be payable to "Lewis Ski Club, Inc.".
7. **CANCELLATION:** If the participant cancels out of the trip, then the participant forfeits their rights to any and all payments made to Lewis Ski Club for this trip. Cancellation by participant means and includes: (a) failure to abide by the terms of this agreement; (b) notice by participant of intent to cancel; (c) participant's failure to make timely payments; (d) participant's failure for any reason to meet departure or return of the trip.
8. **ELIGIBILITY:** Lewis Ski Club membership is required to participate.
9. **EXTRA FEES:** Price does NOT include any additional fuel surcharges, baggage fees, or airport fees which may be imposed prior to the date of travel.

**Print clearly** Trip: \_\_\_\_\_

Applicant Name: \_\_\_\_\_  
(MUST be as it appears on Drivers License/Passport (*for airline ticketing* ))

Address: \_\_\_\_\_

Phone w/area code:  
(H) \_\_\_\_\_ (W) \_\_\_\_\_ (Cell) \_\_\_\_\_

Email address: \_\_\_\_\_

In case of an emergency contact: (Name) \_\_\_\_\_

Phone w/area code: (H) \_\_\_\_\_ (Cell) \_\_\_\_\_

NASA Lewis Ski Club member? Yes / No (If NO, membership available for \$10-single/\$15-family)

Optional Trip Insurance? Yes / No (Information will be forwarded to you)

I have read and agree to all the terms of this Agreement, and waiver of liability, as of this date.

Signed in Agreement: \_\_\_\_\_ Date: \_\_\_\_\_