

# NASA Lewis Ski Club

## Naski Tips

August 2008



**Next Meeting:**  
**August Picnic**  
**Tuesday, Aug. 5**  
**W.J. Green Lodge in the**  
**Cleveland Metroparks**  
**Next Board Meeting:**  
**Tuesday, August 19**  
**Panera Bread, Brooklyn**

### Inside:

President's Message.....	2
Treasure Talk .....	2
Cook Forest Trip.....	3
Upcoming Activities .....	4
Tremont Art Walk .....	6
Put-n-Bay.....	7
Austria .....	8
Steamboat.....	9

**Don't wait until your first day on the slopes to get into ski shape. Try a club hike or bike ride to ease into getting ready for ski season**

### **Picnic Ticket Deadline is Friday, August 1**

**For tickets or more information contact:**

**Gene Addy (216)977-7467**

**Linda Elonen-Wright (216)433-9370**

**Annie Easley (440)816-1215**

**Jan Neumann (440)237-2084**

**Therese Telzrow (216)226-6013**

**Mike Kaltenstein (330)483-4841**

**Frank DiMarco (216)475-8081**

**Be sure to specify your choice: Ribs, Chicken, or Veggie Burger**



**P**resident's message... Summer is quickly rolling into August and I hope you all are well and making the most of this non-ski season. Unlike the Cleveland Indians thus far this season, the club has had quite a few good outings. So, if you still haven't thrown in the towel for the season, come join us and have some fun!! The club's Lineup of off-snow activities, put together by Therese Telzrow, has plenty from which to choose!

It's also time to make plans for winter ski trips! Jim Slifka and Judy Traxler have put together a fantastic excursion to Steamboat. Because of rapidly changing airline policies, we had to move quickly to sell seats to avoid a rather high fuel surcharge. The trip sold out in less than two weeks. If you didn't make that trip, we have another long trip for you; this one to Austria! It includes a week of skiing in Sölden and three days of sight seeing in Vienna. Information is in this newsletter. Don't be left out! Sign up now!

Don't forget the annual picnic, August 5 at the W.J. Green Lodge near Wallace Lake in the Cleveland Metroparks! If you haven't gotten your ticket for the picnic, call one of us NOW (see flyer in this newsletter). It's both great deal and a great time!

See you at the picnic!

Gene

**T**reasurer Talk... I've been busy getting organized in my new position. The club has decided to reinstate the use of "Cash Transaction" forms for all deposits and expenses. If you need reimbursed for expenses incurred or an advanced deposit for a trip, please email me the day before the meeting (in this case Aug.4th) so that I can have a check ready for you. Please include the name the check is to be made out to and remember to bring your receipts. My email is [janetteneumann@sbcglobal.net](mailto:janetteneumann@sbcglobal.net)

Thanks, Jan Neumann

---

## Officers of Lewis Ski Club

### SKI CLUB OFFICERS

President: Gene Addy (216-977-7467)  
Alpine V.P.: Tom Vannuyen (216-433-3851)  
Nordic V.P.: Larry Anderson ([larryamg@hotmail.com](mailto:larryamg@hotmail.com))  
Activity V.P.: Therese Telzrow (216-226-6013)  
Recorder: Janet Dubas (216-741-3161)  
Publicity Director: Eric. McFarland ([mcflnd@cox.net](mailto:mcflnd@cox.net))  
Treasurer: Jan Neumann ([janetteneumann@sbcglobal.net](mailto:janetteneumann@sbcglobal.net))

### COMMITTEE CHAIRS

CMSC Rep: Frank DiMarco ([fpdimarco@yahoo.com](mailto:fpdimarco@yahoo.com))  
Refreshment: Tom Jones (216-433-3718)  
Sunshine: Colin Bidwell (216-433-3947)  
Social: Kathleen Moran ([grossman@cox.net](mailto:grossman@cox.net))  
Racing: Mark Hyatt (216-433-3248)  
Membership: Lisa Ferenc (216-433-6592)  
Web Curator: Linda Elonen-Wright (216-433-9370)  
Alternate Web Curator: Lisa Lambert ([Lisa.Lambert@nasa.gov](mailto:Lisa.Lambert@nasa.gov))  
Trip: Annie Easley (440-816-1215)  
& Mike Kaltenstein (330-483-4841)

**TRUSTEES:** Annie Easley (440-816-1215), Linda Elonen-Wright (216-433-9370) & Mike Kaltenstein (330-483-4841)

**C**ook Forest, PA July 11<sup>th</sup> -13<sup>th</sup> .... We (Jan, Ray, Carol, Kathy, Janet, Matt, Therese and Joe) all had a great time. The trip generated some good stories, from our adventures with wild rides and wild life. On the drive there, Joe and I had a quite a scare when his pop-up trailer came unhitched. By some miracle, we didn't crash (it could have been due to Joe's excellent driving skills and ability to remain cool). There's nothing scarier than seeing a trailer swinging wildly back and forth and up on its wheels in your rear view mirror ...and the sound; I'll never forget (or buy a pop-up either).

Later that night, as we were all enjoying the campfire, we realized the sounds coming from Jan & Ray's campsite were raccoons exploring their cooler. And those darn raccoons made off with some morsels before we could scare them off! They showed up later as I was drifting off to sleep...scratching at my tent! It made me realize how thin my tent really is. I let out a scream, a few cuss words and a cry for help before they made their way to their next victims, Janet and Matt. I could hear their screams and couldn't help but laugh. Those raccoons! I think they wanted us to come out and serve them food since we didn't leave anything out for them.



Our canoe ride on Saturday was pleasant; we had nice weather and even with the low water level we made it easily down the river. Most of us had good navigation skills although some ended up in the wrong direction heading sideways down the river. Next we hiked the Forest Cathedral, an ancient forest filled with tall trees and huge tree trunks reaching out for the sky, sometimes taking a weird angle to get there. Our photographer Joe E did a nice job capturing the moment as you can see from the pictures in this newsletter.

Saturday night was filled with food, food and more food! We sat by the camp fire recovering until the rain came in. Later, I was awakened by a scream and a shout "Raccoons!" followed by laughter. It was just a dream that those raccoons were in your tent, wasn't it, Janet? We all kept dry and for the most part made it back safely home on Sunday. Just ask Joe the next time you see him.

We're already coming with plans for next year. Ideas include Cook Forest again (we've identified some prime spots) or at Ohiopyle where there's plenty to do including whitewater rafting on the Lower Yough, canoeing on the Middle Yough for the less adventurous (or more frugal), bicycling on the Rails to Trails bike path that follows the Youghiogheny River. And Fallingwater and Kentucky Knob are very close. If you have any more ideas, let me know!

Article by **Therese Telzrow**

Photos courtesy of **Joe Ezerskis**

## **NASA Lewis Ski Club Activities**

**Weekly Bike Rides in the Cleveland Metroparks:** Every Wednesday @ 7 pm\*. Meet at the entrance to Sweetwater Landing (by the parking lot) in the Rocky River Reservation's Emerald Necklace Marina by the Detroit Road, Lakewood entrance. This is a moderately paced ride on the path (we don't ride on the road). Contact Therese at 216.226.6013. \*Please note new time.

### **August**

**Kayak trip with Lake Metroparks' Full Moon with Candlelight Paddle on Friday August 15<sup>th</sup>** has been **sold out**. For more information about what Lake Metroparks has to offer, contact Leigh Garza at 440.585.2800 or visit [www.lakemetroparks.com](http://www.lakemetroparks.com).

***Annual Picnic at WJ Green Lodge in Metroparks Berea - Tuesday, August 5<sup>th</sup> from 4 to 10pm, dinner at 6 pm. See the front cover this newsletter for more information.***

**Tremont Art Hop** Friday August 8<sup>th</sup>. Event is from 6-10 pm. Tremont is located at W. 14th and Starkweather, Cleveland, OH 44113. Meet at the Prosperity Social Club\* at 6 pm. [1109 Starkweather Ave //www.prosperitysocialclub.com/](http://www.prosperitysocialclub.com/) 216.637.1938. For more information about Tremont go to [www.restoretremont.com](http://www.restoretremont.com). Contact Therese Telzrow at 216.226.6013. \*Note new meeting location.

**Saturday at Put in Bay - Saturday August 9<sup>th</sup>** Meet at NASA early in the morning for a day trip to this fun island. Hike, bike, shop, lunch. See attached flyer for more information. Contact Jan Neumann at [janetteneumann@sbcglobal.net](mailto:janetteneumann@sbcglobal.net) or 440.237.2084

**Walk & Roll Cleveland Bike Ride** Sunday August 24. MLK Jr Drive will be closed to cars from 11 am to 6pm so you can explore Rockefeller Park and the Cultural Gardens. We'll meet at Edgewater Park at 11 am and bike via the Lakefront Bikeway to the northern end of MLK Jr Drive and Rockefeller Park. If that distance is too far, contact me and we can set up an alternate meeting place. Visit [www.walkroll.com](http://www.walkroll.com) for more information about this and other events this organization has to offer. Contact Therese Telzrow at 216.226.6013.

**Blossom Night at the Movies:** Celebrating Warner Bros. 85<sup>th</sup> Anniversary, Sunday, August 31<sup>st</sup>: The Blossom Festival Orchestra will be performing with George Daugh-

erty conducting. Scenes from the movies will be projected on large screens as the orchestra plays show tunes. Gate price at the box office for lawn seats is \$20. However, being the last night to use lawn book tickets, many patrons are typically selling them at cost (\$13) or below. You may just luck out. Showtime is 8:30 pm. I highly recommend coming early (before 7:00) due to the popularity of the concert. Bring your own picnic and beverages to enjoy. For directions and more information go to <http://www.clevelandorch.com/html/blossom/BlossomIndex.asp?SiteType=B> Please email me, Jan Neumann, for details on meeting spot inside the gates at [janetteneumann@sbcglobal.net](mailto:janetteneumann@sbcglobal.net) Ray and I will save a spot on the lawn marked with ski poles.

## September

Look for details about our upcoming Fall Hike in the next newsletter.





## Tremont Art Walk Friday August 8th, 2008

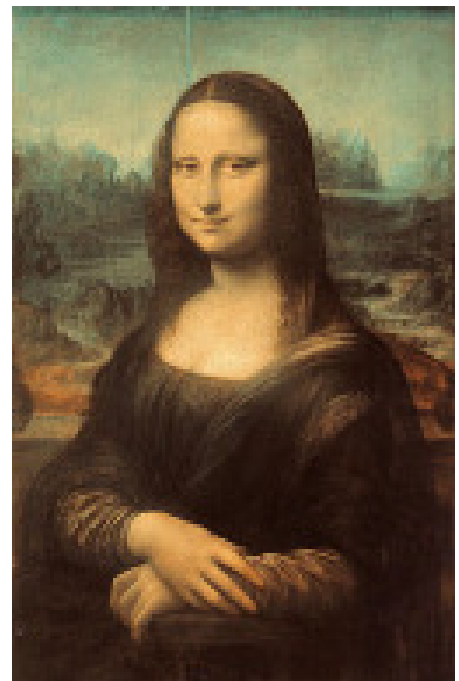
**Where:** Prosperity Social Club to start...  
1109 Starkweather Ave. in Tremont  
<http://www.prosperitysocialclub.com/>  
216-937-1938

**When:** Meet at 6PM, Event 6-10PM

**Rain or Shine:** This is a free event. It is basically a "check out the galleries, pubs and establishments in our Tremont neighborhood walk." For those of you who may be unfamiliar with it, Tremont is a really fun, artsy, cool area for a walk about. There are numerous galleries, pubs and restaurants. Check out Tremont's website for more information at <http://www.restoretremont.com/arthop/>

**Contact Therese Telzrow at 216.226.6013**

**\*Note new meeting location.**



# LEWIS SKI TRIP TO PUT-IN-BAY

## ON SATURDAY AUGUST 9



We'll meet at the NASA D.E.B. parking lot (north side of Brookpark Rd.) at 8 AM to carpool. We'll take the Miller Boat Line on Catawba to Put-In-Bay.

Website: <http://www.put-in-bay.com/>

On the island bike and golf cart rentals are available or bring your own bike.

Visit the beach, museums, caves, Perry's Memorial, Butterfly House, shops, brewery, winery and more. We will take the ferry back in the evening (after dinner) around 8:00.

### Ferry Rates (round trip)

Adults: \$13

Children (6-11) \$3

Bikes: \$4

Contact Jan Neumann at ['janetteneumann@sbcglobal.net'](mailto:janetteneumann@sbcglobal.net) to RSVP.



# **TRAVEL WITH NASA LEWIS SKI CLUB TO SOLDEN AND VIENNA, AUSTRIA March 20-31, 2009**

Round trip air and ground transportation  
Seven nights lodging at Alpina in Sölden  
Breakfast and dinner included daily

Three nights lodging at Trend Hotel Ananas in Vienna  
Breakfast buffet included daily at hotel  
Lots to see and do in Vienna including the Opera House

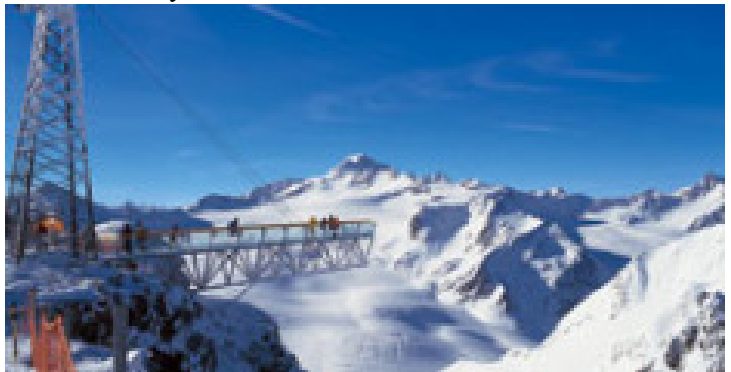
Lift tickets are optional in Sölden (not included in trip price) and may be purchased from one to six days

Cost is \$2380.00US(double occupancy)  
Single supplement is available

**Payment schedule:**

Deposit due now \$500.00 (\$200.00 non-refundable)  
August 29, 2008 \$700.00  
October 10, 2008 \$700.00  
January 10, 2008 \$480.00

Checks payable to NASA Lewis Ski Club  
Mail to: Annie Easley  
23215 Wainwright Terrace  
Olmsted Falls, OH 44138



Membership required in NASA Lewis Ski Club  
Need Valid Passport for travel

Trip Insurance is available

Questions? Call Annie Easley at 440-816-1215

Email: [AJEASL@SBCGLOBAL.NET](mailto:AJEASL@SBCGLOBAL.NET)

Or

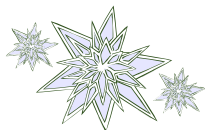
Sandi Miller at 216-433-8489

Email: [SANDI.G.MILLER@NASA.GOV](mailto:SANDI.G.MILLER@NASA.GOV)

**You could be  
here**







# Ski COLORADO Steamboat

With the NASA Lewis Ski Club

February 1 - 8, 2009

**\$1040.00 per person\***

Includes:

Lodging - The Ranch at Steamboat - 7 nights (Sun. to Sun.), 6 per 3 bdrm/3 bath condo

Lift tickets - 5 days of skiing at Steamboat (6th day only \$26 more)

Roundtrip Airfare from Cleveland

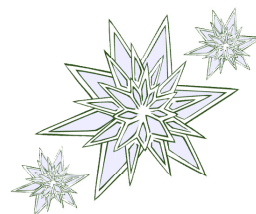
Ground transportation from Hayden (Steamboat airport) to condos

✓ **Complimentary** welcome party upon arrival

✓ **Complimentary** slopeside ski storage

✓ **FREE** shuttle service provided by lodge to resort and town

✓ **Outdoor heated** pool, 3 hot tubs, sauna, & fitness center



For sign-up, contact trip leaders:

Jim Slifka 440-232-3331 home

440-292-5300 cell

[djslif@sbcglobal.net](mailto:djslif@sbcglobal.net)

Judy Traxler 330-483-4455 home

330-421-7733 cell

[jatraxler@aol.com](mailto:jatraxler@aol.com)

**Payment schedule:**

\$420.00 due now, non-refundable

\$310.00 due by September 15, 2008

\$310.00 due by November 1, 2008

**Send deposit check with trip application and agreement form to:**

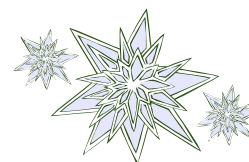
Judy Traxler  
6222 Boston Rd.

Valley City, OH 44280

Make Checks payable to:

**Lewis Ski Club, Inc.**

Optional trip insurance available



**Note:** Must be a member of the NASA Lewis Ski Club.

For additional information and membership forms, please visit our website at: <http://www.lewisskiclub.org>

**\* Price does NOT include any additional fuel surcharges, baggage fees, or airport fees which may be imposed prior to the date of travel.**

**\*\*Trip Application and Agreement form required.**

## Lewis Ski Club

### Trip Application and Agreement

The undersigned participant applies to participate in the Lewis Ski Club trip described below, subject to the following terms and conditions:

1. **DEPOSIT:** The required initial deposit for this trip must be paid and submitted along with a signed Trip Application and Agreement. Balance shall be due and payable in accordance with payment schedules established by Lewis Ski Club.
2. **WITHDRAWAL & CHANGE:** Lewis Ski Club may withdraw any trip from its schedule at any time; may refuse to accept or retain any person as a participant at any time for any reason; and may change the itinerary at any time.
3. **RESPONSIBILITY:** Lewis Ski Club is acting gratuitously for the applicant and shall not be responsible or liable for any loss of damage to baggage, property, or for any loss, injury, death, accident, delay, inconvenience or any other loss occurring during or occasioned by applicant's participation or lack of participation in any trip. Trip participants ski and/or snowboard at their own risk. It is the injured skier's/snowboarder's responsibility to report to Ski Patrol for treatment or referral to hospital/doctor. If unable to accompany the club on return trip as planned, the injured party is responsible for arranging their own transportation for the return trip.
4. **IDENTIFICATION:** Each participant is responsible for having and taking with them a valid, current, government-issued, photo ID. For trips out of the USA, participants are responsible for having up-to-date and valid passport. When required, participants are also responsible for having up-to-date and valid visa(s).
5. **MINORS:** Any minor's participant Trip Application and Agreement must be co-signed by his/her parent or legal guardian. The minor must be accompanied on the trip by a parent or legal guardian or their designee who shall be wholly and fully responsible for said minor's conduct and well being.
6. **PAYMENT:** All payment checks shall be payable to "Lewis Ski Club, Inc."
7. **CANCELLATION:** If the participant cancels out of the trip, then the participant forfeits their rights to any and all payments made to Lewis Ski Club for this trip. Cancellation by participant means and includes: (a) failure to abide by the terms of this agreement; (b) notice by participant of intent to cancel; (c) participant's failure to make timely payments; (d) participant's failure for any reason to meet departure or return of the trip.
8. **ELIGIBILITY:** Lewis Ski Club membership is required to participate.
9. **EXTRA FEES:** Price does NOT include any additional fuel surcharges, baggage fees, or airport fees which may be imposed prior to the date of travel.

**Print clearly** Trip: \_\_\_\_\_

Applicant Name: \_\_\_\_\_  
(MUST be as it appears on Drivers License/Passport (*for airline ticketing*))

Address: \_\_\_\_\_  
\_\_\_\_\_

Phone w/area code:  
(H) \_\_\_\_\_ (W) \_\_\_\_\_ (Cell) \_\_\_\_\_

Email address: \_\_\_\_\_

In case of an emergency contact: (Name) \_\_\_\_\_

Phone w/area code: (H) \_\_\_\_\_ (Cell) \_\_\_\_\_

NASA Lewis Ski Club member? Yes / No (If NO, membership available for \$10-single/\$15-family)

Optional Trip Insurance? Yes / No (Information will be forwarded to you)

I have read and agree to all the terms of this Agreement, and waiver of liability, as of this date.

Signed in Agreement: \_\_\_\_\_ Date: \_\_\_\_\_